

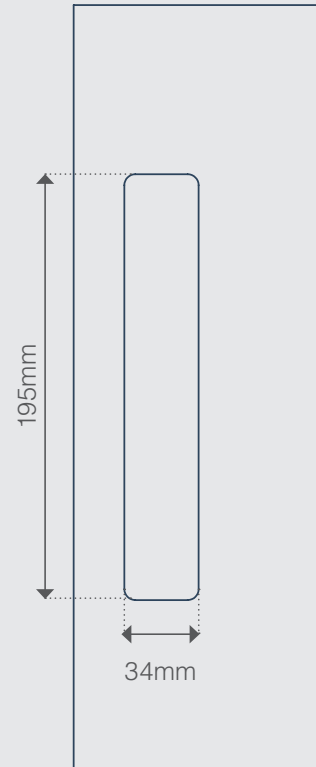
**Product Code**  
**5620**

### LUME – Single Flush Pull - Timber Door

#### Step 1 - Flush Pull Crop Out\*

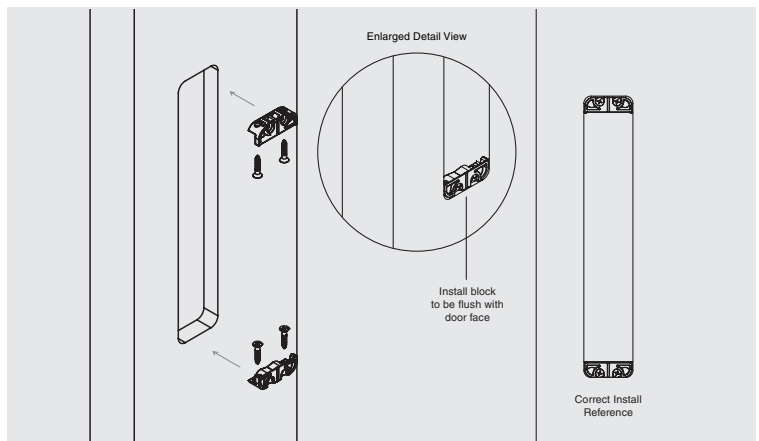
- A. Mark desired backset.
- B. Cut Rebate at a depth of 12mm minimum.

Installation Diagram



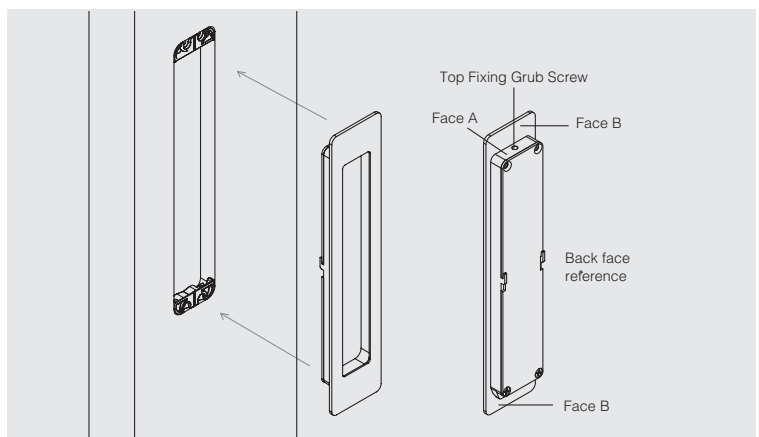
#### Step 2 - Install Blocks

- A. Apply install blocks to flush pull rebate.
- B. Use 4 x supplied wood screws fix vertically.



#### Step 3 - Flush Pull Installation

- A. Ensure the top fixing grub screw is flush or sub flush with face A.
- B. Insert the flush pull in place ensuring that face B sits hard up against the door face.
- C. Tighten the top fixing grub screw to lock the flush pull in place.



Product Code  
5620

### LUME – Single Flush Pull (200mm) - Timber Door

#### FLUSH PULL REBATE (Vertical fixed install blocks)

- A. Mark desired backset.
- B. Cut Rebate at a depth of 12mm minimum.

