



**Product Codes**  
5700, 5800, 5710,  
5810, 5720, 5820

### LUME - Privacy Set - Timber Door

#### Step 1 - Flush Pull Crop Out\*

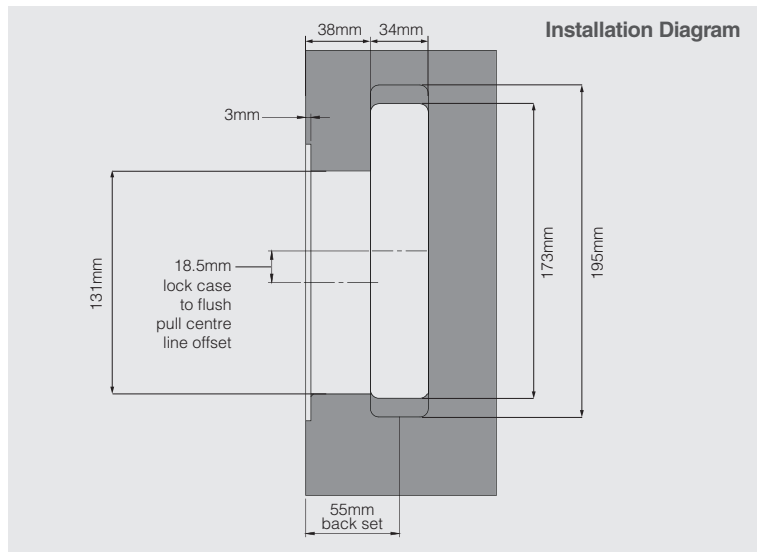
- A. Ensure the critical 55mm backset measurement is correct before cutting.
- B. Select install block fixing face fixed (option 1) or vertically fixed (option 2).
- C. Cut Rebate Option 1 - for face fixed install blocks (recommended).
- D. Cut Rebate Option 2 - for vertically fixed install blocks.

\*REFER TO DETAILED CROP OUT TEMPLATE PROVIDED.

#### Step 2 - Lock Case Crop Out\*

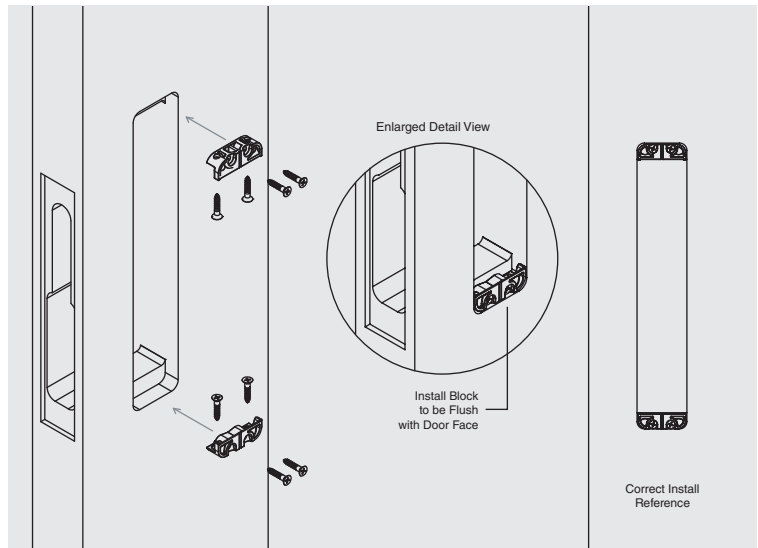
- A. Cut 3mm face plate rebate.
- B. Select lock case rebate option 1 or option 2.
- C. Cut rebate option 1 - for face plate with integrated edge pull.
- D. Cut rebate option 2 - for face plate without integrated edge pull.
- E. Cut lock case rebate through to flush pull rebate.

\*REFER TO DETAILED CROP OUT TEMPLATE PROVIDED.



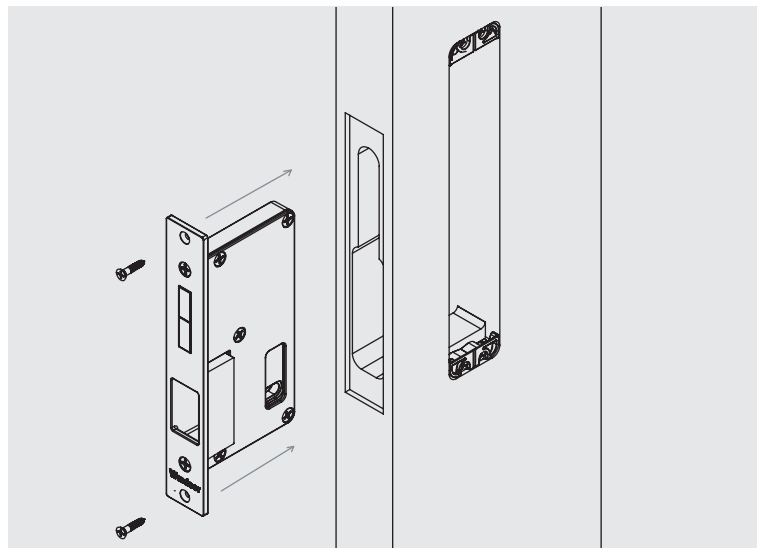
#### Step 3 - Install Blocks

- A. Apply install blocks to flush pull rebate.
- B. Use 4 x supplied wood screws to either face fix or vertically.
- C. Repeat for the opposite side.



#### Step 4 - Lock Case Install

- A. Install the lock case.
- B. Use the two supplied wood screws to fix the lock case in place.
- C. Ensure the face plate sits flush with the door edge.



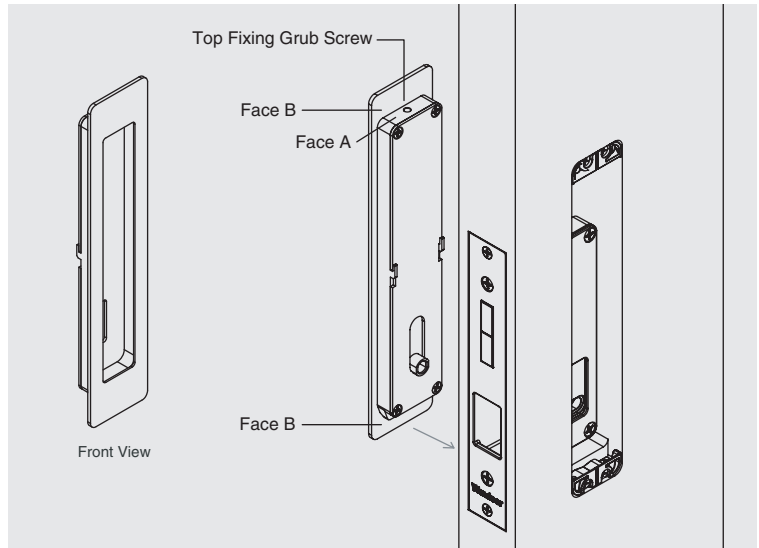


**Product Codes**  
5700, 5800, 5710,  
5810, 5720, 5820

### LUME - Privacy Set - Timber Door

#### Step 5 - Snib Action Flush Pull Install

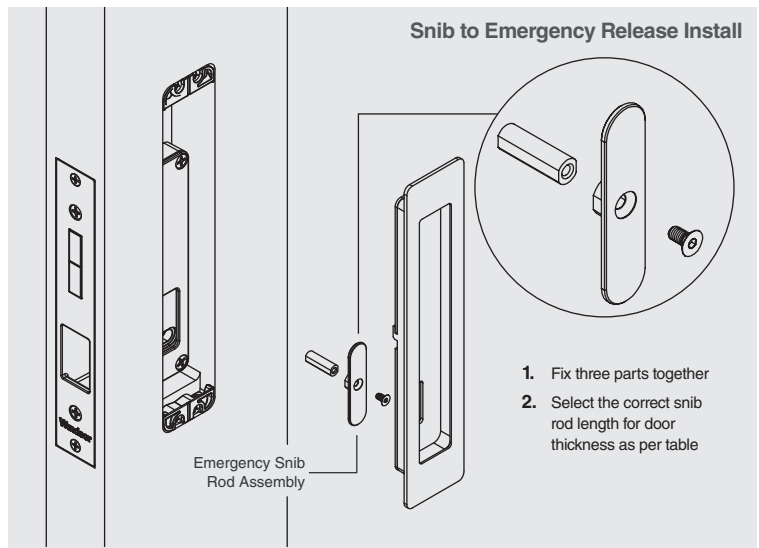
- Install flush pull with snib action.
- Ensure the top fixing grub screw is flush or sub flush with face A.
- Insert the flush pull in place ensuring that face B sits hard up against the door face.
- Tighten the top fixing grub screw to lock the flush pull in place.



#### Step 6 - Emergency Release Flush Pull

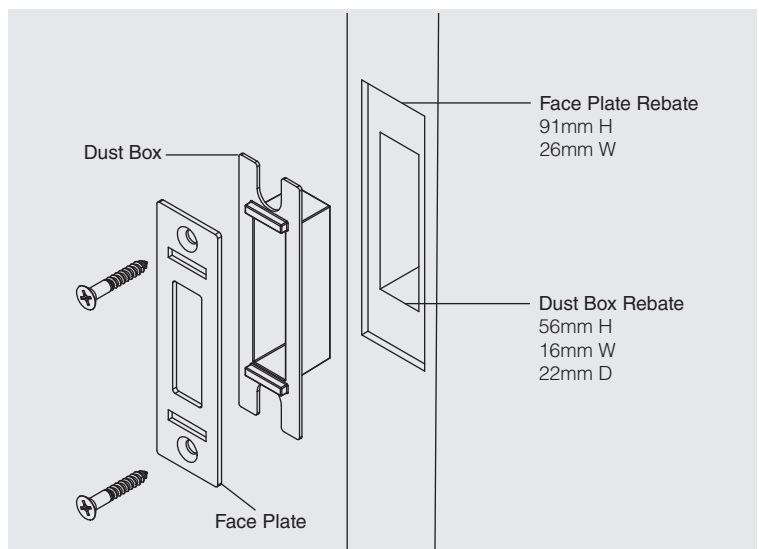
- Select the correct length snib rod for the door thickness.
- Attach the snib rod to the emergency release snib using the supplied screw.
- Ensure the top fixing grub screw is flush or sub as per [Step 5](#).
- Install the emergency release snib rod assembly - guide the snib rod through the lock case throw and into the pre-installed flush pull snib.
- With the snib rod in place. Install the flush pull repeating [Step 5](#).
- Tighten the top fixing grub screw to lock the flush pull in place.
- Test the assembly by moving the flush pull snib. Correct operation will open the lock case Mortice.

Privacy Snib to Emergency Release		Privacy Snib to Snib Install Option	
Door Thickness	Snib Rod Length	Door Thickness	Snib Rod Length
35mm	18mm	35mm	22mm
38mm	18mm	38mm	22mm
40mm	20mm	40mm	24mm
42mm	22mm	42mm-65mm	50-cut down to custom
42mm+	50-cut down to custom		



#### Step 7 - Timber Door Strike Installation

- Ensure crop out centre point aligns with lock case mortice centre point.
- Fix dust box and face plate in place.
- Ensure face plate is flush.
- Test the strike with the mortise to ensure correct installation.



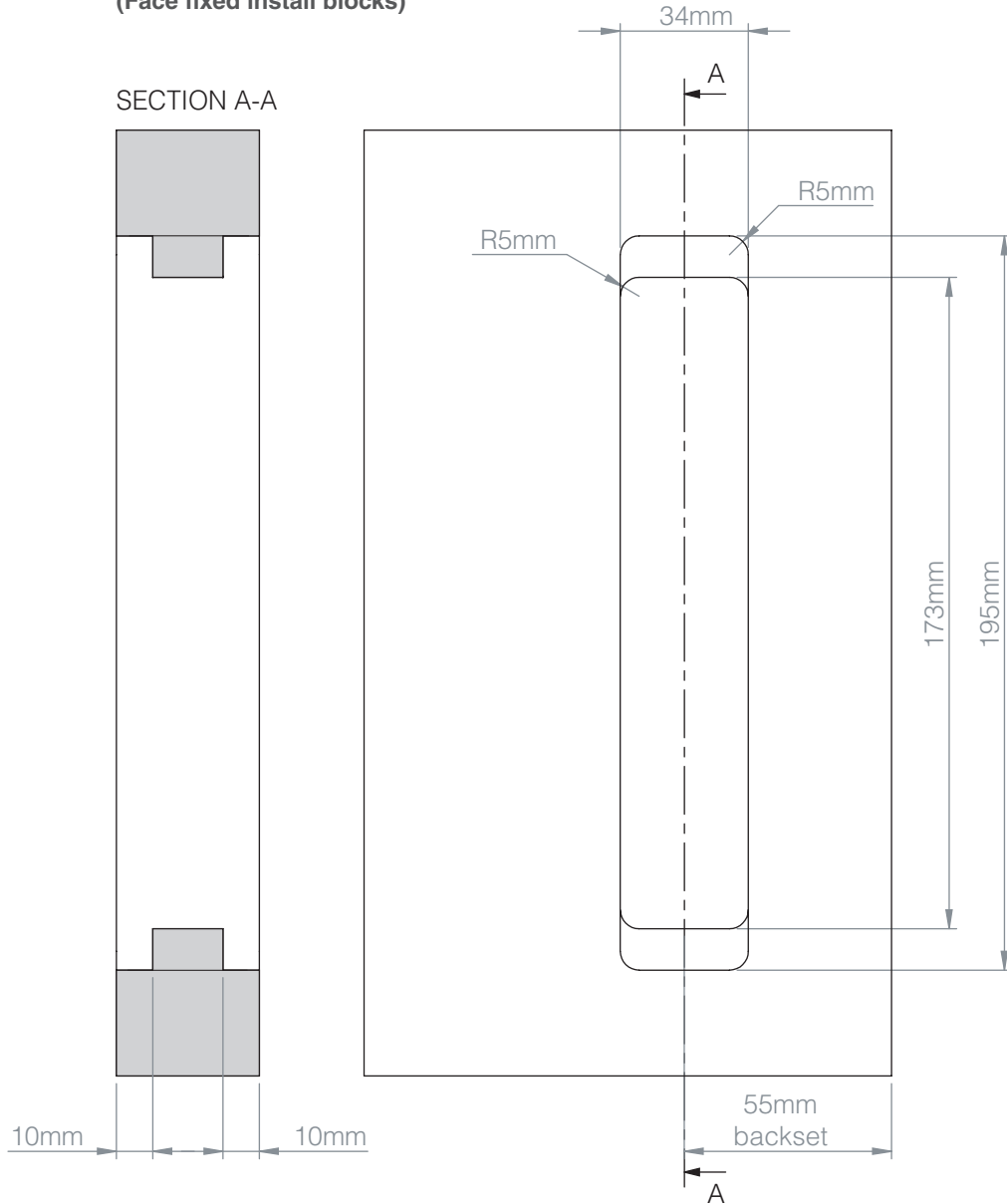


- A. Ensure the critical 55mm backset measurement is correct before cutting
- B. Select install block fixing face fixed (option 1) or vertically fixed (option 2).
- C. Cut rebate option 1 - for face fixed install blocks (Recommended).
- D. Cut rebate option 2 - for vertically fixed install blocks.

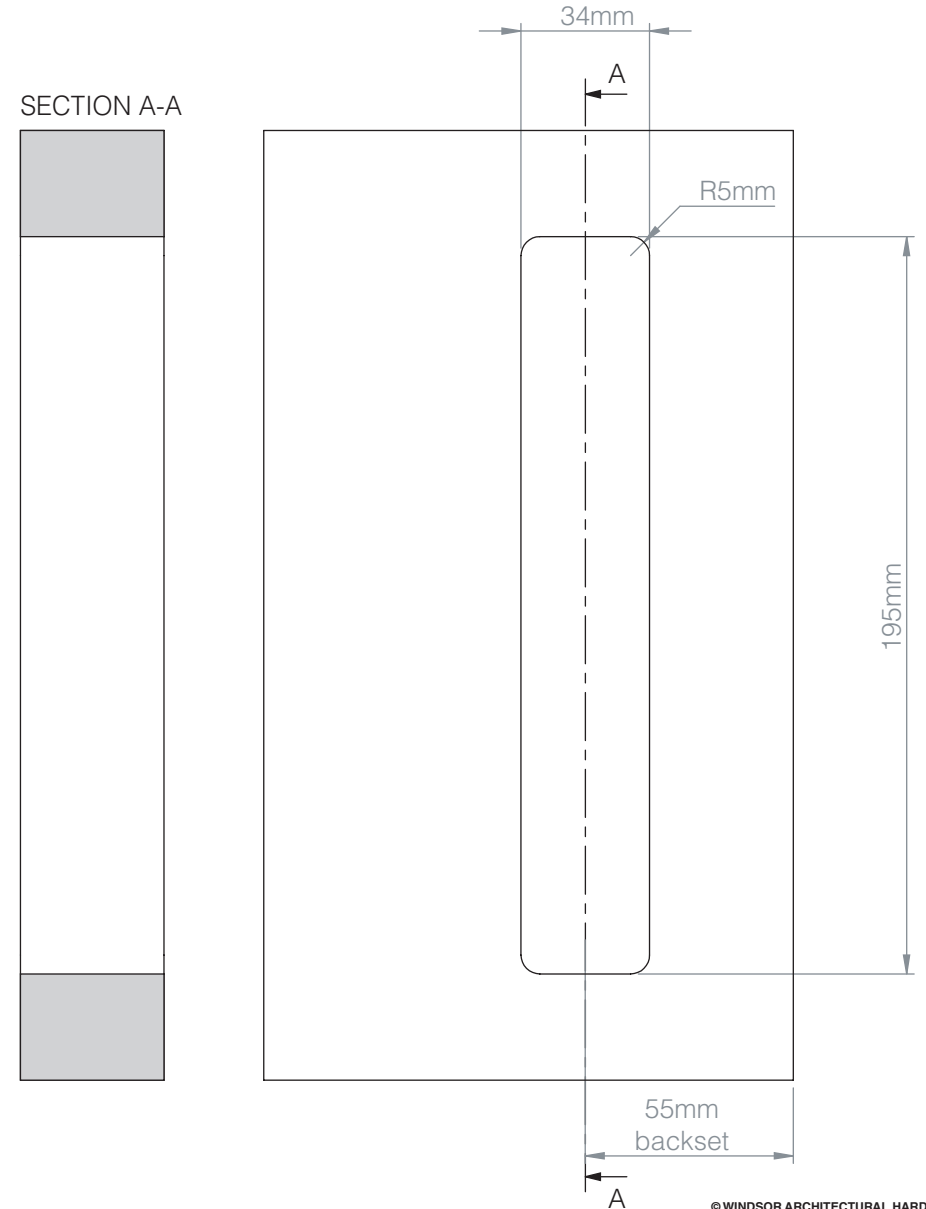
**Product Codes**  
5700, 5800, 5710, 5810, 5720, 5820

**LUME - Privacy Set - Timber Door - FLUSH PULL (200mm)**

### FLUSH PULL REBATE OPTION 1 (Face fixed install blocks)



### FLUSH PULL REBATE OPTION 2 (Vertical fixed install blocks)



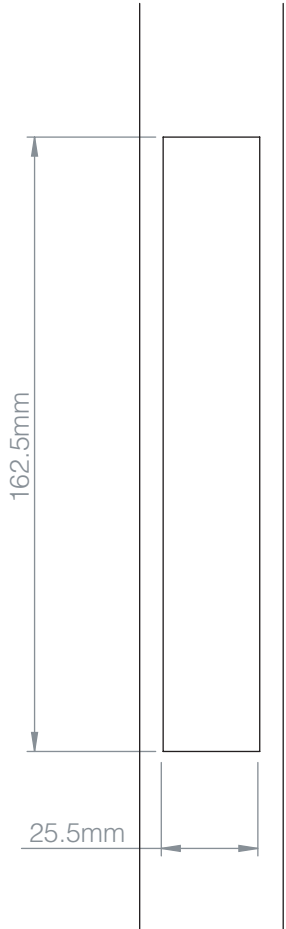


- A. Cut 3mm face plate rebate.
- B. Select lock case rebate option 1 or option 2.
- C. Cut rebate option 1 – for face plate with integrated edge pull.
- D. Cut rebate option 2 – for face plate without integrated edge pull.
- E. Cut lock case rebate through to flush pull rebate.

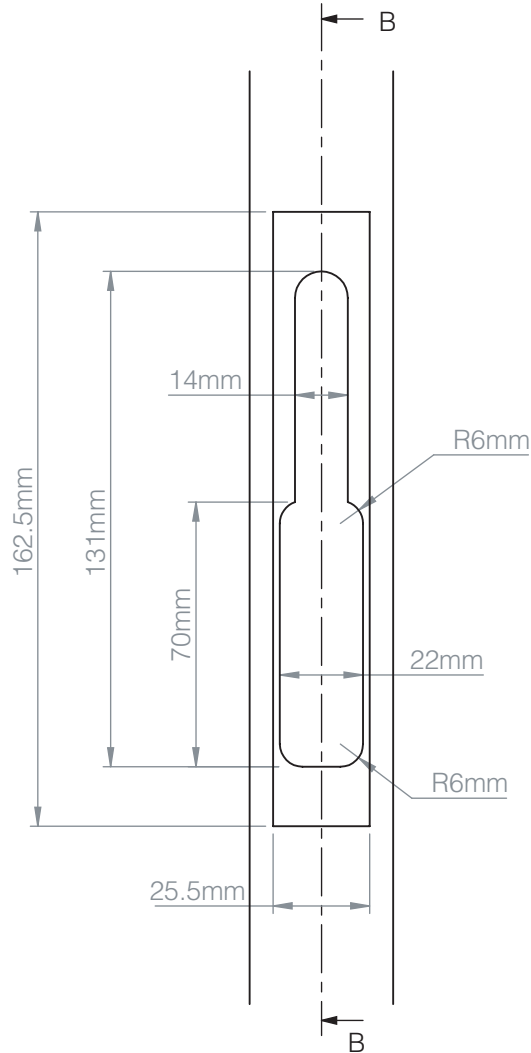
**Product Codes**  
5700, 5800, 5710, 5810, 5720, 5820

**LUME - Privacy Set - Timber Door - LOCK CASE (55mm Backset)**

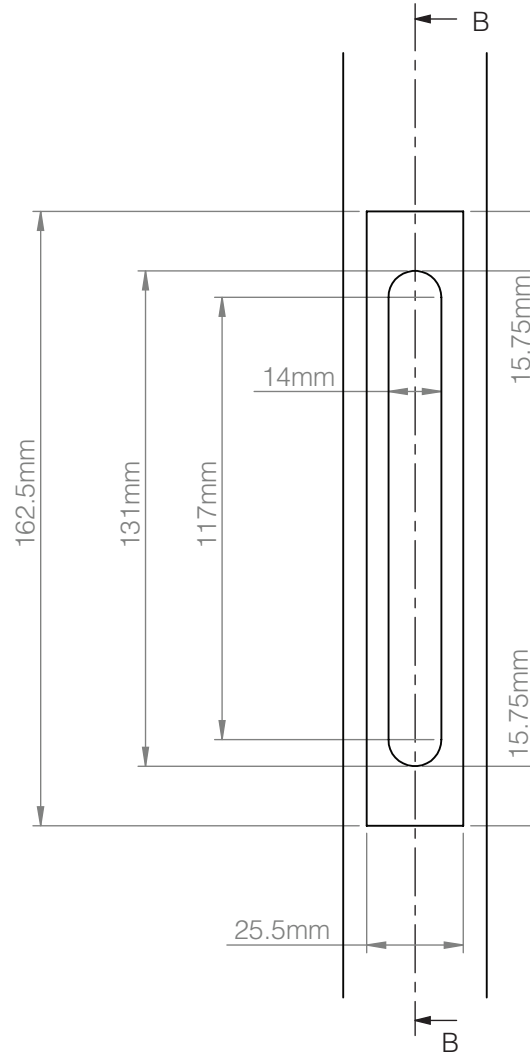
**3MM FACE PLATE REBATE**



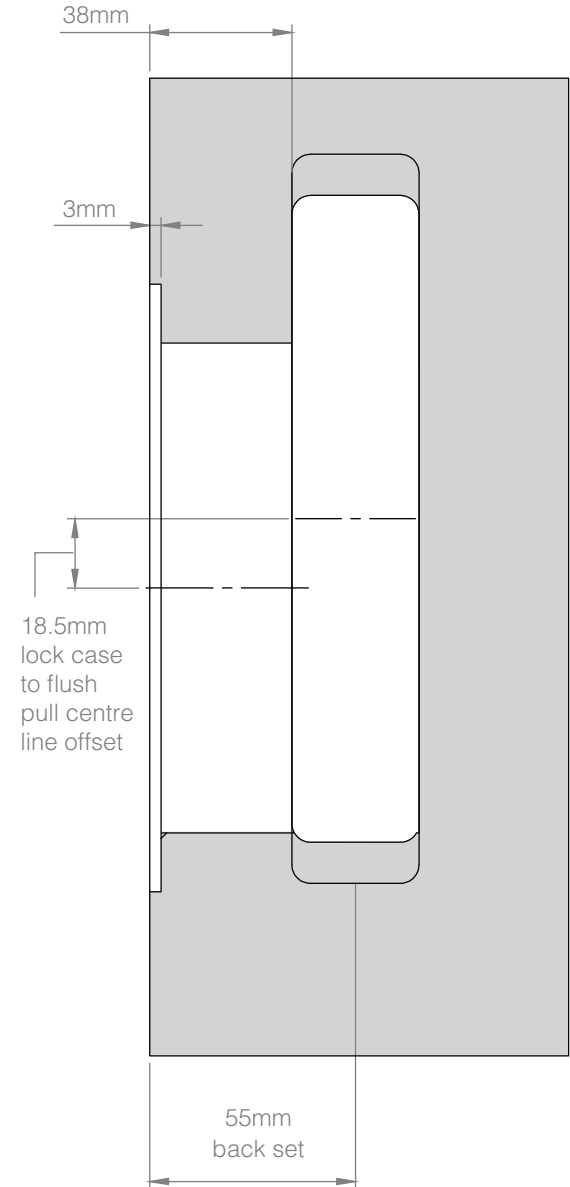
**LOCK CASE REBATE OPTION 1  
(Face plate with integrated edge pull)**



**LOCK CASE REBATE OPTION 2  
(Face plate without integrated edge pull)**



**LOCK CASE REBATE DETAILED**





**Product Codes**  
5700, 5800, 5710,  
5810, 5720, 5820

### LUME - Privacy Set - Aluminium Door

#### Step 1 - Flush Pull Crop Out\*

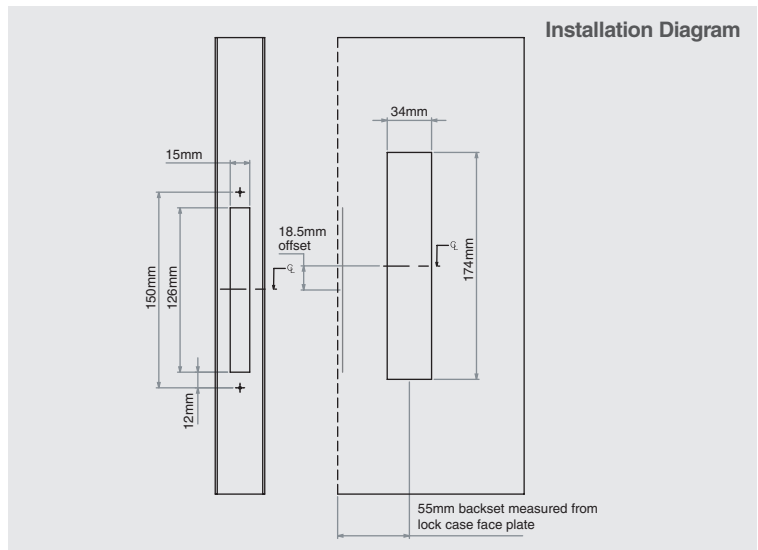
- A. Ensure the critical 52mm backset measurement is correct before cutting. Measured from the rebated front face. (from the lockcase faceplate to the middle of the flush pull will become 55mm).
- B. Cut the flush pull crop out-both sides.

\*REFER TO DETAILED CROP OUT TEMPLATE PROVIDED.

#### Step 2 - Lock Case Crop Out\*

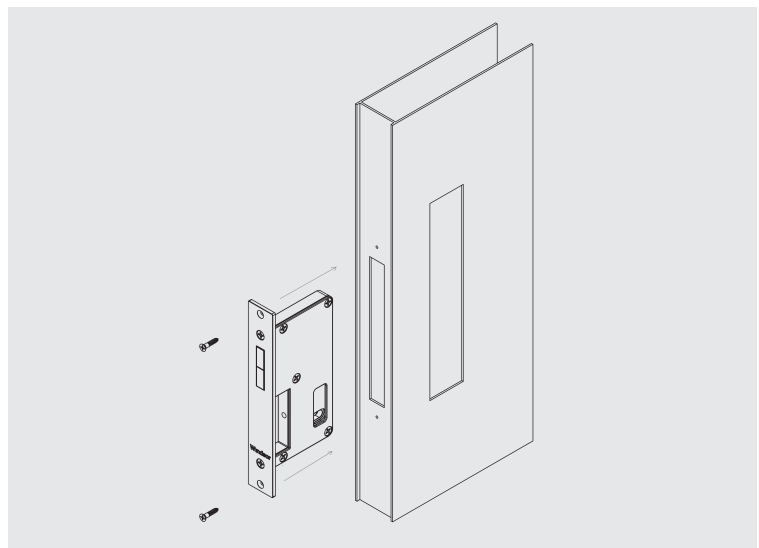
- A. Select lock case crop out option 1 or option 2.
- B. Ensure the correct offset from the flush pull cropout.
- C. Cut rebate option 1 – for face plate without integrated edge pull.
- D. Cut rebate option 2 – for face plate with integrated edge pull.

\*REFER TO DETAILED CROP OUT TEMPLATE PROVIDED.



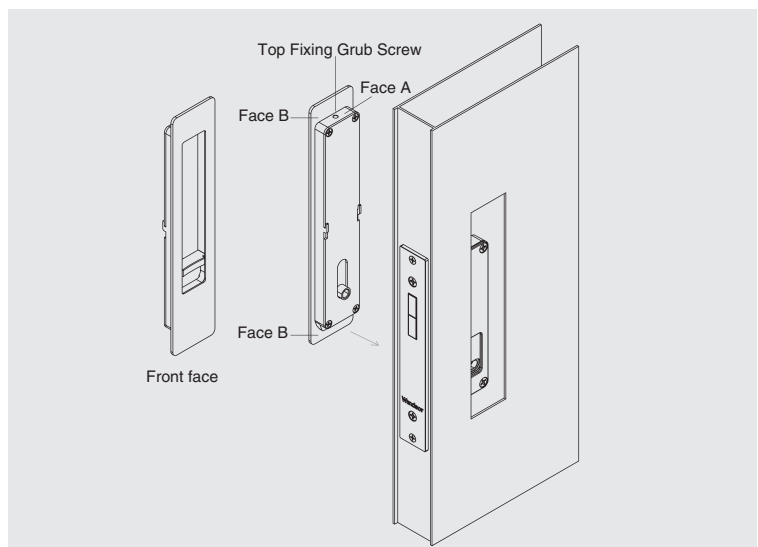
#### Step 3 - Lock Case Install

- A. Install the lock case.
- B. Use the two supplied screws to fix the lock case in place.
- C. Ensure the face plate sits up against the aluminium face.



#### Step 4 - Snib Action Flush Pull Install

- A. Install flush pull with snib action.
- B. Ensure the top fixing grub screw is flush or sub flush with face A.
- C. Insert the flush pull in place ensuring that face B sits hard up against the door face.
- D. Tighten the top fixing grub screw to lock the flush pull in place.





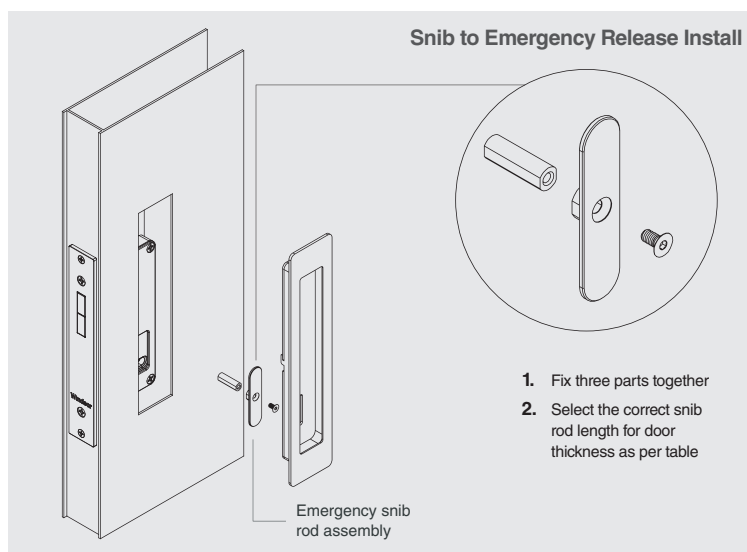
**Product Codes**  
5700, 5800, 5710,  
5810, 5720, 5820

### LUME - Privacy Set - Aluminium Door

#### Step 5 - Emergency Release Flush Pull

- Select the correct length snib rod for the door thickness.
- Attach the snib rod to the emergency release snib using the supplied screw.
- Ensure the top fixing grub screw is flush or sub as per Step 4.
- Install the emergency release snib rod assembly - guide the snib rod through the lock case throw and into the pre-installed flush pull snib.
- With the snib rod in place. Install the flush pull repeating Step 5.
- Tighten the top fixing grub screw to lock the flush pull in place.
- Test the assembly by moving the flush pull snib.
- Correct operation will open the lock case Mortice.

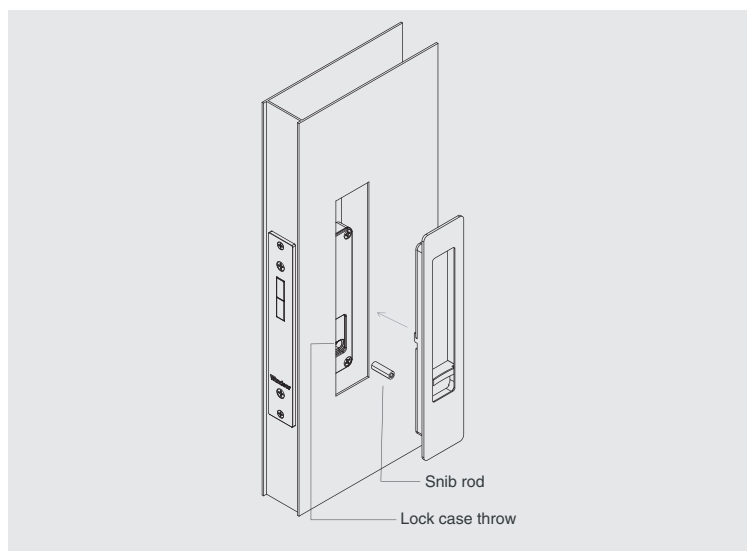
Privacy Snib to Emergency Release	
Door Thickness	Snib Rod Length
35mm	18mm
38mm	18mm
40mm	20mm
42mm	22mm
42mm+	50-cut down to custom



#### Step 6 - Snib to Snib Flush Pull Install

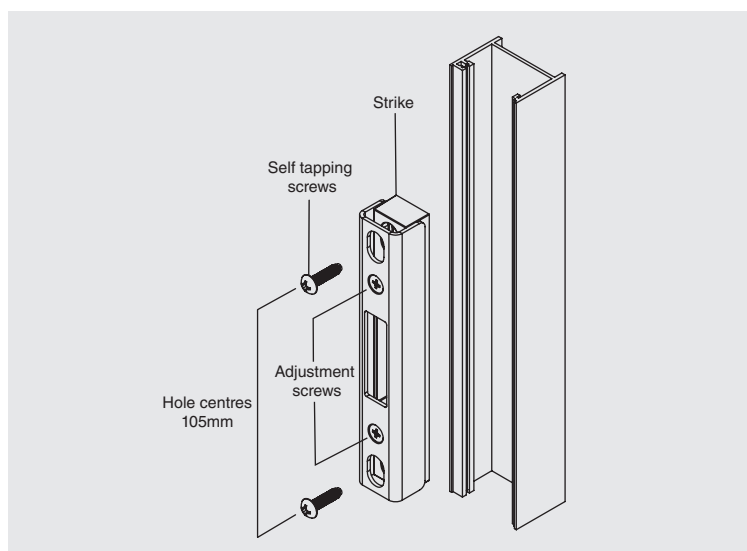
- Select the correct length snib rod for the door thickness.
- Install the snib rod - guide the snib rod through the lock case throw and into the pre-installed flush pull snib.
- With the snib rod in place. Install the flush pull repeating Step 4.
- Ensuring the snib engages with the snib rod.
- Tighten the grub top screw to lock the flush pull in place.
- Test the assembly by moving one or both flush pull snibs.
- Correct operation will open the lock case Mortice.

Privacy Snib to Snib Install Option	
Door Thickness	Snib Rod Length
35mm	22mm
38mm	22mm
40mm	24mm
42mm-65mm	50-cut down to custom



#### Step 7 - Aluminium Door Strike Installation

- Ensure strike centre point aligns with lock case mortice centre point.
- Mark hole centres and predrill holes.
- Use the self-tapping screws to fix strike in place. For correct mortice alignment.
- Adjust vertical alignment on slotted holes before tightening.
- Adjust strike position using two adjustment screws.
- Test the strike with the mortise to ensure correct installation.



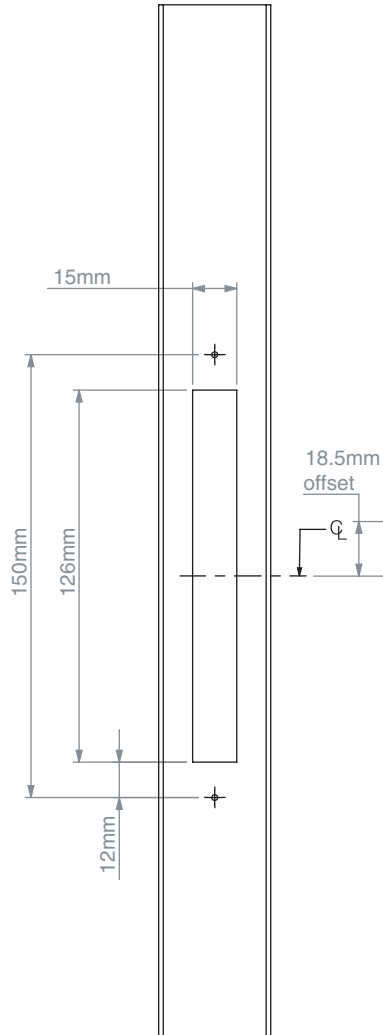


- A. Ensure the critical 55mm backset measurement is correct before cutting
- B. Select install block fixing face fixed (option 1) or vertically fixed (option 2).
- C. Cut rebate option 1 - for face fixed install blocks (Recommended).
- D. Cut rebate option 2 - for vertically fixed install blocks.

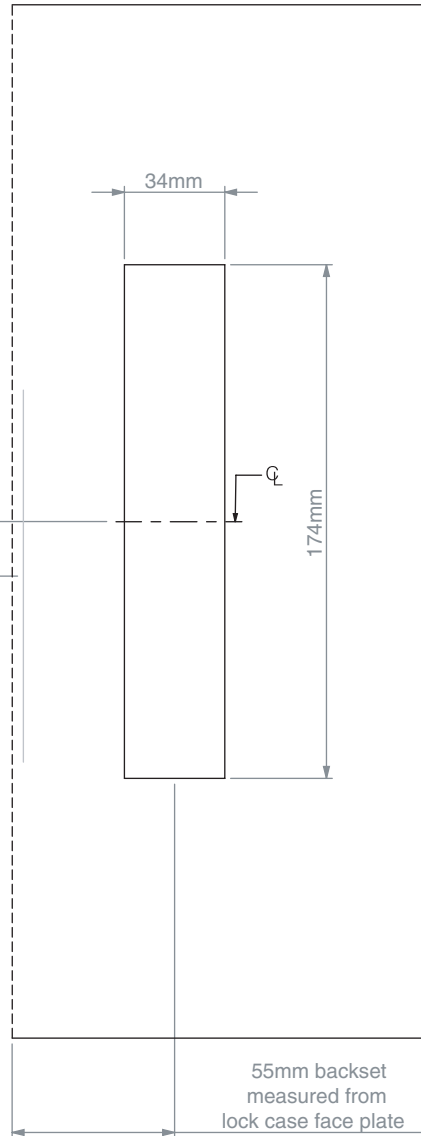
**Product Codes**  
5700, 5800, 5710, 5810, 5720, 5820

LUME - Privacy Set - Aluminium Door - FLUSH PULL (200mm)

**LOCK CASE CROP OUT OPTION 1  
(Face plate without integrated edge pull)**



**FLUSH PULL CROP OUT  
(common)**



**LOCK CASE CROP OUT OPTION 2  
(Face plate with integrated edge pull)**

