

PIVOTING HINGE - PIVOTICA

Product code: 9800

Door Dimensions

Min. - Max. door thickness: 38 - 100mm

Min. - Max. door width: 300 - 1500mm

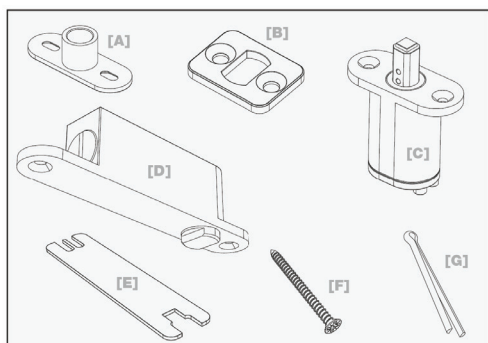
Min. - Max. door weight: 20 - 60kg*

Min. - Max. tolerance between top of the door and ceiling: 3 - 7mm (loaded 6 - 10mm)
Tolerance between bottom of the door and floor: 5mm

*(max. 45kg to guarantee good operation of the door closer)

Package Contents

Note: The screws supplied are to be used to affix the top and bottom pivot system to the door leaf. Screws to attach the ceiling and floor plate have not been provided. You will have to obtain suitable screws and plugs (depending on the surface to be used) yourself.

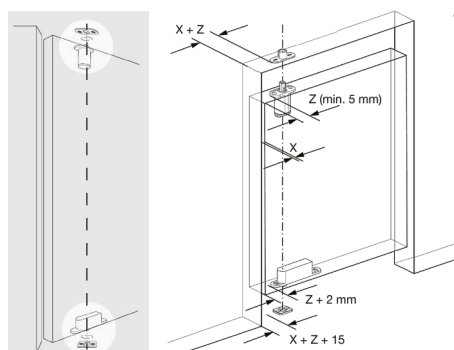


Part	Description	QTY
A	Ceiling Plate	1
B	Floor Plate	1
C	Top Pivot System	1
D	Bottom Pivot System	1
E	Wrench	1
F	Screws (type DIN 7505 - Ø 5mm x 25mm)	4
G	Splint pin (type DIN 94 - 3.2mm x 32mm)	1

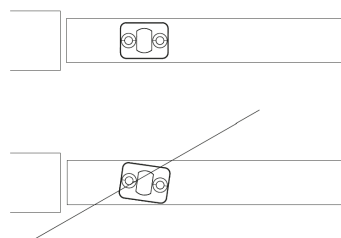
Tools Needed

- Drill (Ø 20mm)
- Cutter (Ø 30mm)
- Cutter (Ø 25mm)
- Screws (and plugs) to attach the floor and ceiling plate
- Flat long-nose pliers
- Screw driver (slotted & Phillips)

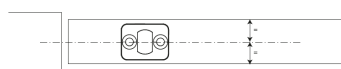
Installation Instructions



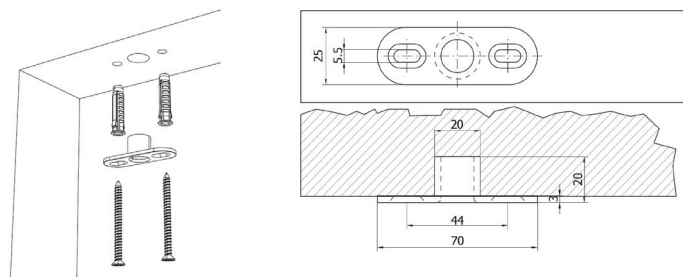
1. The ceiling plate, top pivot system, floor plate and bottom pivot system must be aligned vertically as precisely as possible. Refer to the diagram for exact placement measurements.



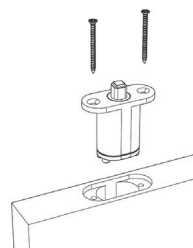
2. All parts must be perfectly aligned with the wall/door leaf.



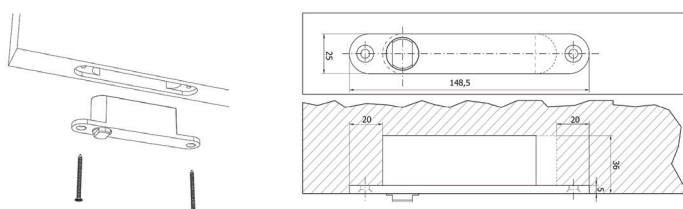
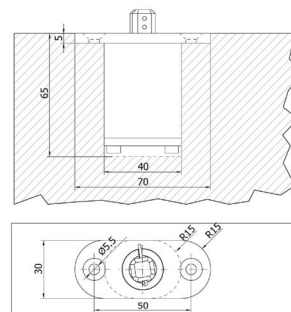
3. All parts must be placed in the centre of the edge of the door leaf.



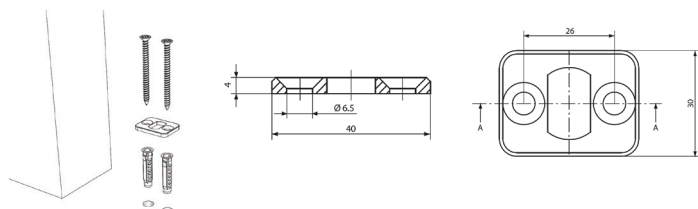
4. To install the ceiling plate, drill a 20mm diameter hole 20mm deep into the ceiling. Secure the ceiling plate in place with appropriate screws, using plugs if necessary.



5. To install the top pivot system, cut a morticed hole into the top edge of the door leaf as shown in the diagram. Place the top pivot system into the hole and secure it in place with the screws provided.



6. To install the bottom pivot system, cut a morticed hole into the bottom edge of the door leaf as shown in the diagram. Place the bottom pivot system into the hole and secure it in place with the screws provided.



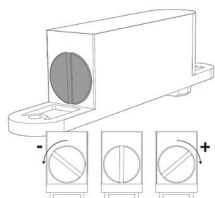
7. To install the floor plate, secure it in place with appropriate screws, using plugs if necessary.

PIVOTING HINGE - PIVOTICA

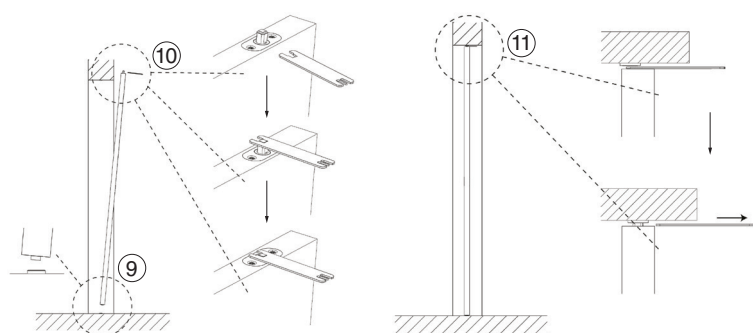
Product code: 9800

Door Installation

Note: The standard spring tension is set for a door of approx. 30kg. If the door is heavier than this, it will be more difficult to close it or not close completely unless the tension is adjusted. If the door is lighter than this, it will close too fast and hard unless the tension is adjusted.

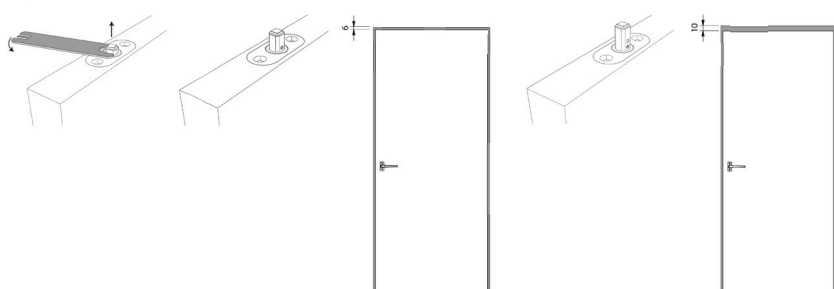


- 8.** To increase the spring tension turn the slot in the bottom pivot system clockwise for heavier doors. To reduce the spring tension turn the slot counter-clockwise for lighter doors. After installation of the door (steps 9-13) and testing the operation, this step can be repeated until the tension works appropriately. This step can only be executed when the door is uninstalled.

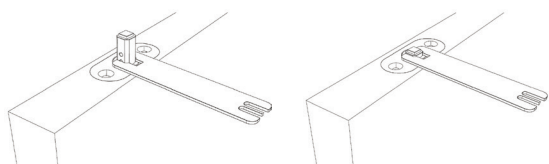


- 9.** To install the door, place the axis of the bottom pivot system in the floor plate.
- 10.** Use the wrench to push the axis of the top pivot system down completely.
- 11.** Place the door vertically and allow the axis of the top pivot system to shoot into the ceiling plate by removing the wrench.

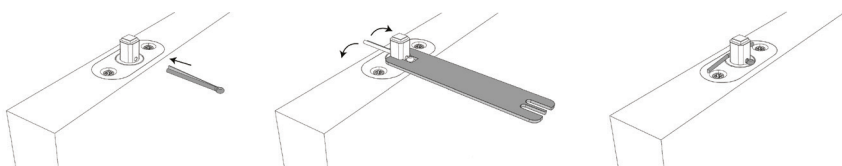
Note: To ensure easy installation, the top axis extends 10mm above the top pivot system. This is not enough to ensure safe operation, before being put into use, the axis must be placed higher.



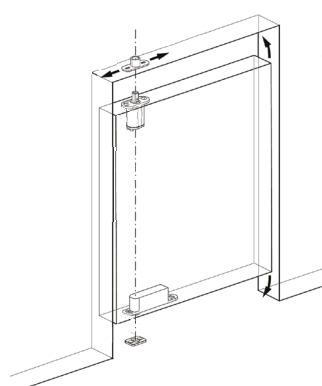
- 12.** Adjust the top axis by screwing it upwards with the wrench. For the minimum tolerance of 6mm between the top of the door panel and the ceiling, screw upwards until the first hole in the axis is visible. For the maximum tolerance of 10mm between the top of the door panel and the ceiling, screw upwards until the second hole in the axis is visible.
- 13.** Test the operation of the system and the tension on the door by opening and closing it several times. If necessary, adjust the spring tension of the system again by repeating step 8, after disassembling the door leaf (step 14).



- 14.** If the spring tension needs adjusted after the door has been installed, it needs to be uninstalled again. To uninstall the door, turn the axis in the top pivot system down completely using the wrench provided. Then remove the door from the floor plate. Before re-installing the door, the axis in the top pivot system must be turned up approx. 1cm, then follow steps 9-13.



- 15.** When the operation of the system works fine, place the splint pin in the hole (first hole for a tolerance of 6mm and second hole for a tolerance of 10mm). Place the wrench around the axis to lock it in place and fold the splint pin with the help of flat long-nose pliers.



- 16.** To adjust the door horizontally, shift the ceiling plate to the left or right until the door leaf sits perfectly horizontally straight.

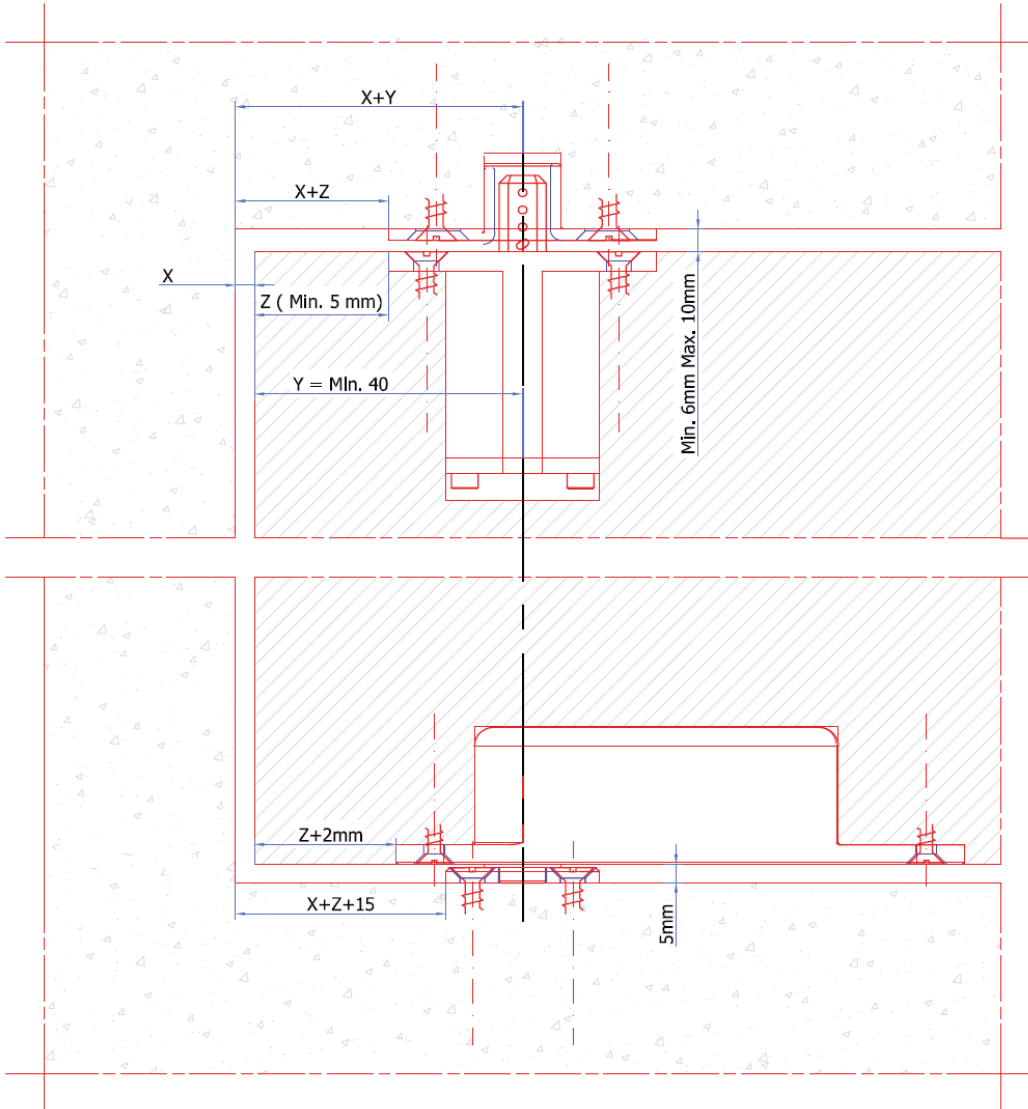
Maintenance

Clean the pivoting hinge at least once a year. The top pivoting system should be lubricated at least once a year. More frequently depending on the frequency of use.

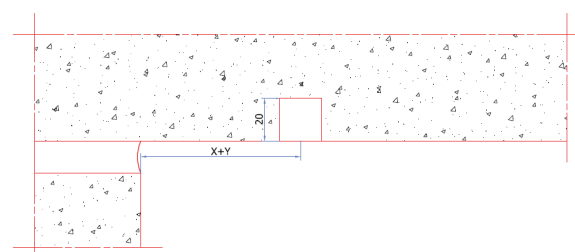
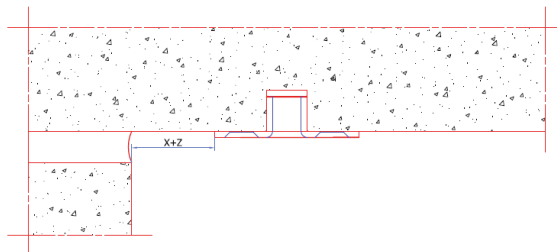
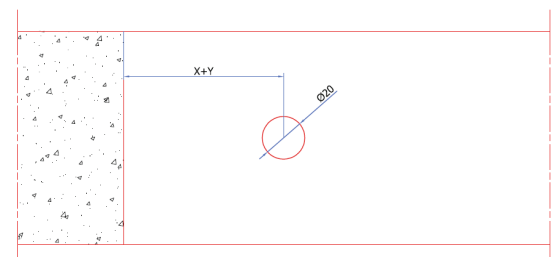
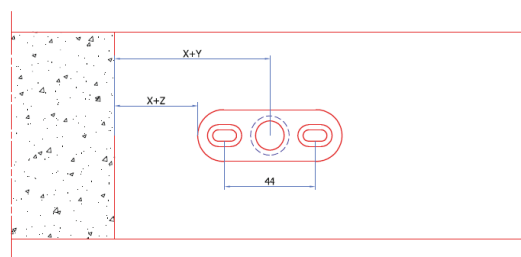
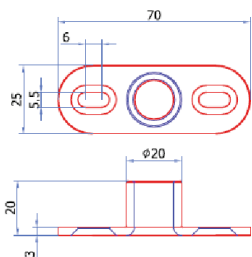
PIVOTING HINGE - PIVOTICA

Product code: 9800

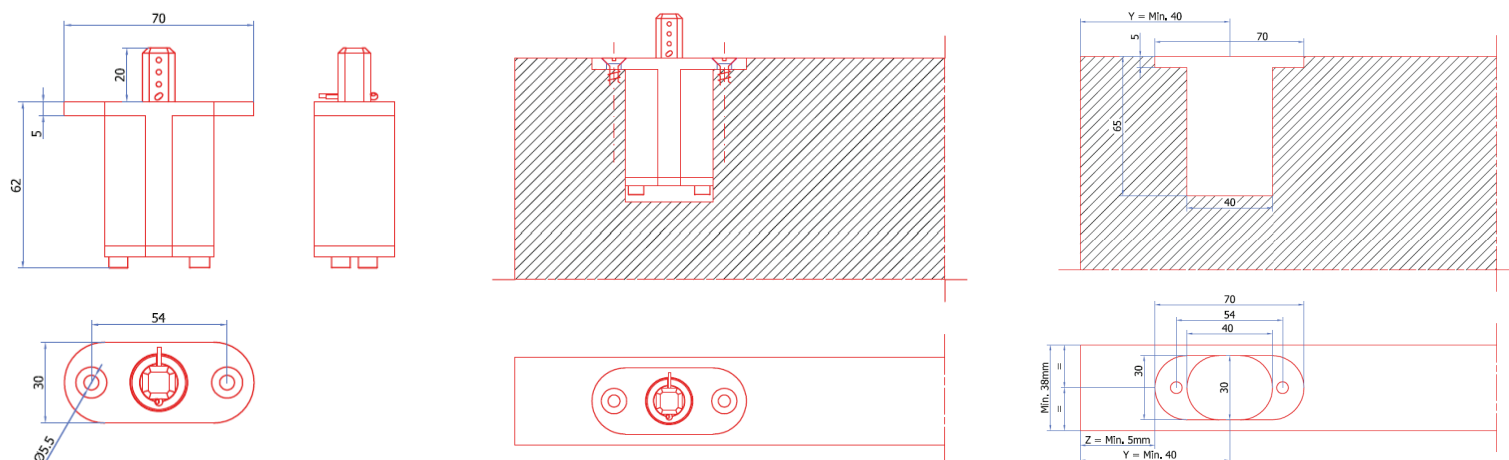
Assembled



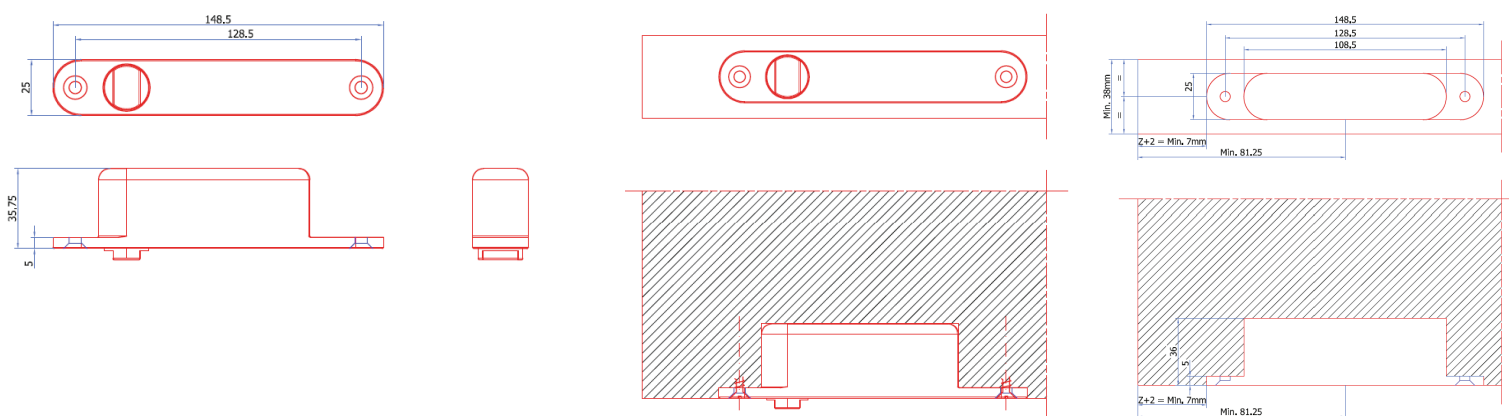
Ceiling Plate



Top Pivot System



Bottom Pivot System



Floor Plate

