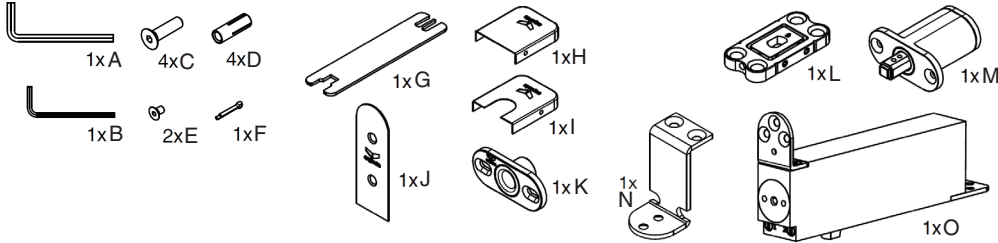


### PIVOTING HINGE - PIVOTICA PRO 150

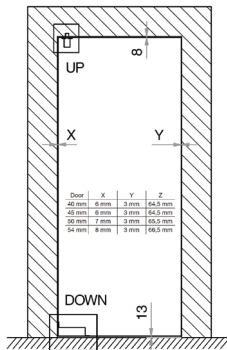
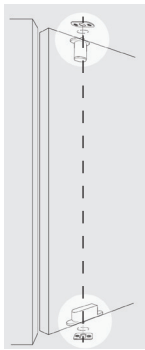
Product code: 9805

#### Package Contents

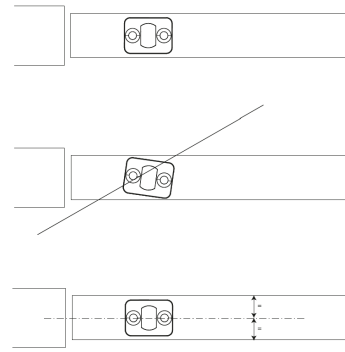


Part	Description	Quantity
A, B	Allen Keys	2
C, D, E	Screws for floor plate	10
F	Splint pin type DIN 94 (3.2mm x 32mm)	1
G	Wrench	1
H, I	Floor Plate Covers	2
J	Bottom Pivot System Cover	1
K	Ceiling Plate	1
L	Floor Plate	1
M	Top Pivot System	1
N	Bottom Pivot System	1
O	Bottom Pivot System	1

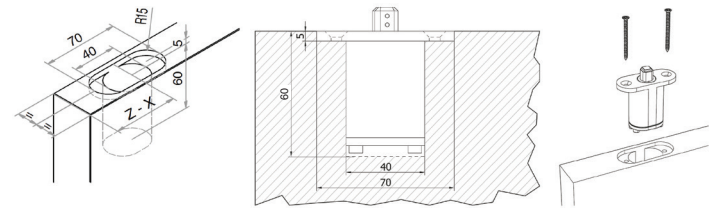
#### Installation Instructions



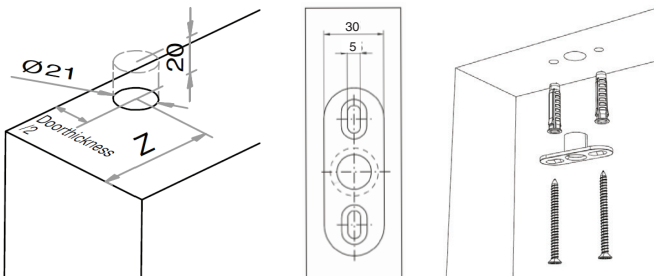
1. The ceiling plate, top pivot system, floor plate and bottom pivot system must be aligned vertically as precisely as possible. Refer to the diagram for exact placement measurements.



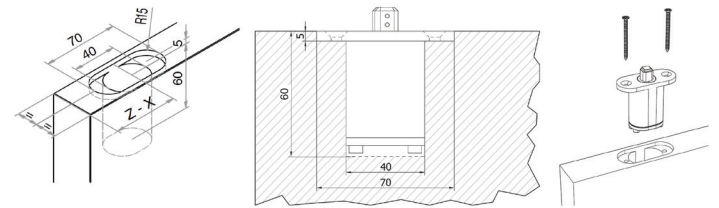
2. All parts must be perfectly aligned with the wall/door panel.



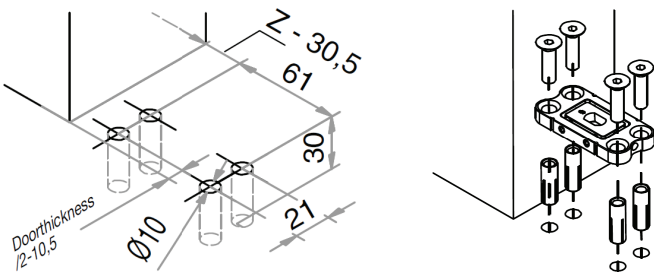
3. All parts must be placed in the centre of the edge of the door panel.



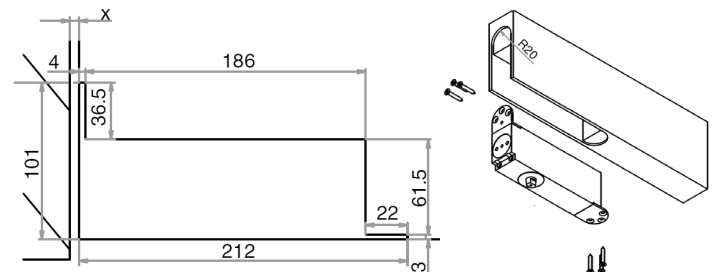
4. To install the ceiling plate, drill a 21mm diameter hole 20mm deep into the ceiling. Secure the ceiling plate in place with appropriate screws, using plugs if necessary.



5. To install the top pivot system, cut a morticed hole into the top edge of the door panel as shown in the diagram. Place the top pivot system into the hole and secure it in place with appropriate screws.



6. To install the floor plate, secure it in place with the screws provided as shown in the diagram.

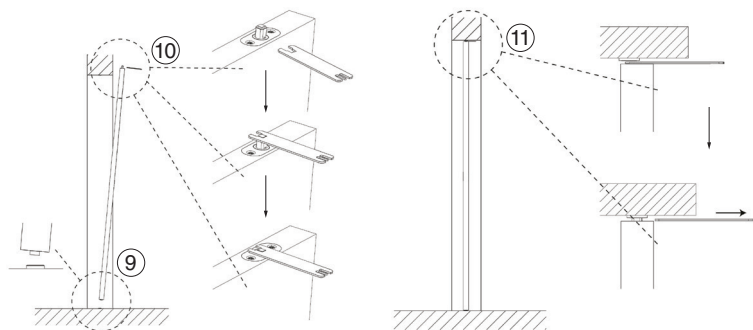


7. To install the bottom pivot system, cut a morticed hole into the bottom edge of the door panel as shown in the diagram. Place the bottom pivot system into the hole and secure it in place with appropriate screws.

### PIVOTING HINGE - PIVOTICA PRO 150

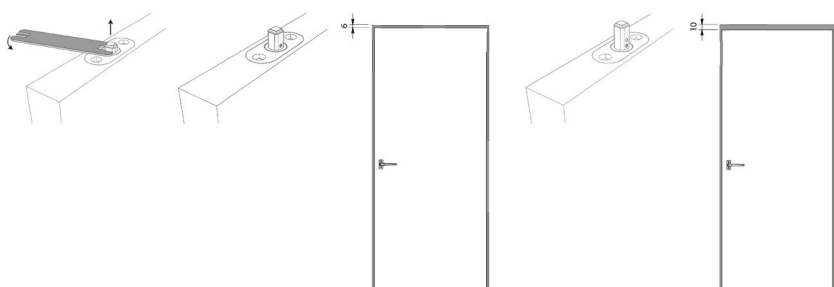
Product code: 9805

#### Door Installation

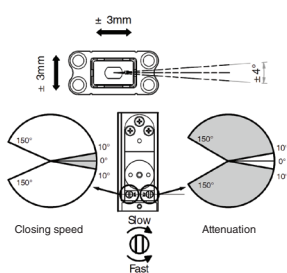


8. To install the door, place the axis of the bottom pivot system in the floor plate.
9. Use the wrench to push the axis of the top pivot system down completely.
10. Place the door vertically and allow the axis of the top pivot system to shoot into the ceiling plate by removing the wrench.

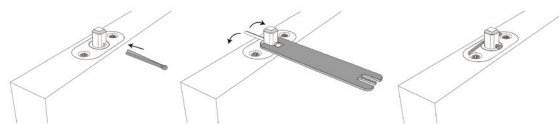
*Note: To ensure easy installation, the top axis extends 10mm above the top pivot system. This is not enough to ensure safe operation, before being put into use, the axis must be placed higher.*



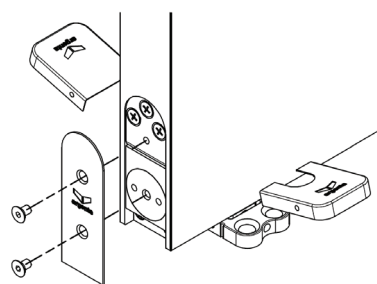
11. Adjust the top axis by screwing it upwards with the wrench. For the minimum tolerance of 6mm between the top of the door panel and the ceiling, screw upwards until the first hole in the axis is visible. For the maximum tolerance of 10mm between the top of the door panel and the ceiling, screw upwards until the second hole in the axis is visible.
12. Test the operation of the system and the tension on the door by opening and closing it several times. If necessary, adjust the closing speed and attenuation by following the next step.



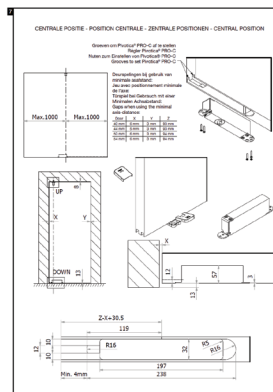
13. To adjust the closing speed and attenuation, turn the slots in the bottom pivot system. The placement of the floor plate can also be adjusted slightly.



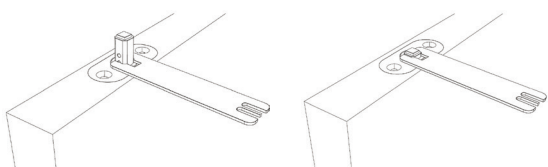
14. When the operation of the system works fine, place the splint pin in the hole (first hole for a tolerance of 6mm and second hole for a tolerance of 10mm). Place the wrench around the axis to lock it in place and fold the splint pin with the help of flat-nose pliers.



15. Attach the cover plates to the bottom pivot system and floor plate.



16. Adjustments?? Part 'N'?



17. To uninstall the door, turn the axis in the top pivot system down completely using the wrench provided. Then remove the door from the floor plate. Before re-installing the door, the axis in the top pivot system must be turned up approx. 1 cm, then follow steps 9-13.

#### Maintenance

Clean the pivoting hinge at least once a year. The top pivoting system should be lubricated at least once a year. More frequently depending on the frequency of use.