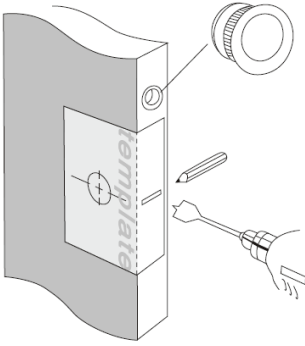


CAVITY SUITES

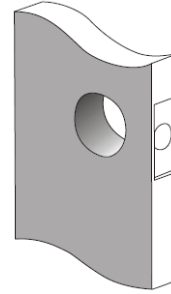
Product codes:

5327 | 5328 | 5331 | 5332

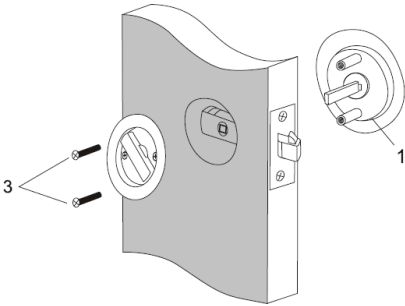


1. Fold the template where indicated on the door edge at the desired latch height. Firmly hold the template in place and mark the latch height and escutcheon hole centre at the required backset.
2. Measure the door thickness and mark the centre. Drill a 25mm (1") diameter hole through the door. Ensure this hole is square to the door.
3. Drill a 54mm hole through the door. We recommend using a 54mm hole saw. For clean cut-outs, drill from both sides, meeting in the middle of the door.

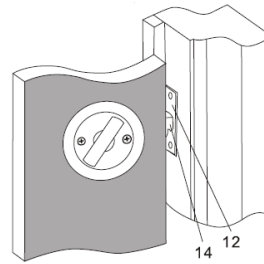
4. Insert the latch, scribe around the faceplate (8), remove, then chisel out a 4mm recess to enable the latch faceplate to sit flush with the door edge.



5. Remove any loose saw dust, insert the latch and secure it with the wood screws provided (10).



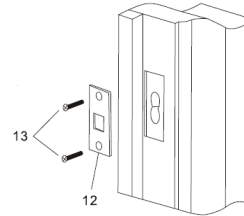
6. Assemble the external escutcheon (1) to the door with the posts for the screws. Then assemble the internal escutcheon with the screw holes to the door. Fasten the escutcheons with the screws provided (3). Check the latch moves freely and readjust the escutcheons if required.



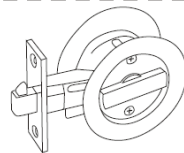
7. Close the door against the frame and mark the latch (14) position for fitting of the striker. (12)

8. Router or chisel a recess to a depth of 1.6mm so the striker fits flush.

9. Using the template provided drill two 19mm diameter holes to a depth of 15mm to allow for the latchbolt. Fit and fasten the striker (12) with the screws provided. (13)

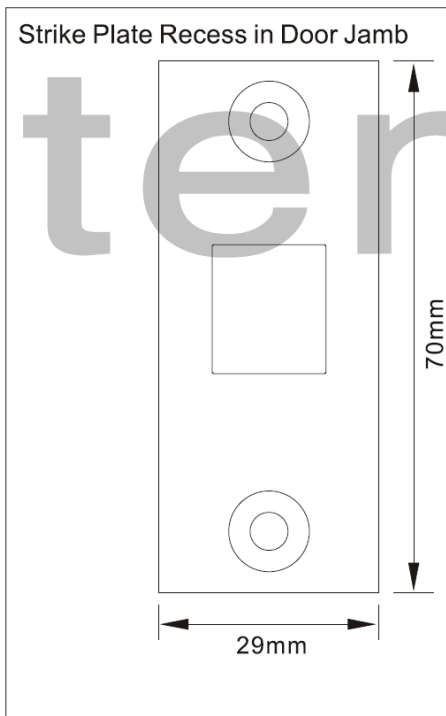


PLEASE PRINT AT 100% SCALE



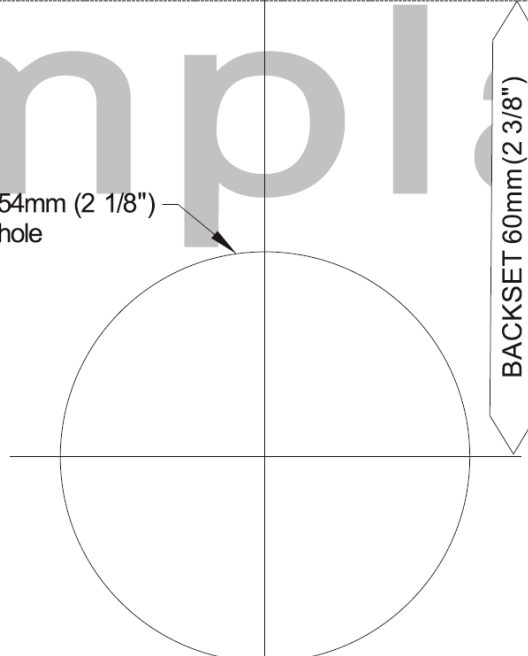
Mark centre-line of latch hole
Mark centre-line of latch hole

Installation template for Sliding Cavity Door Lock



FOLD HERE

54mm (2 1/8") hole



BACKSET 60mm (2 3/8")

Fit here on door edge

CAVITY SUITES

Product codes:
5327 | 5328 | 5331 | 5332

