

TOUCHPAD ELECTRONIC DEADBOLT LOCK

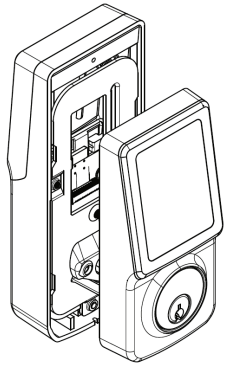
Product code: 1331

Safety Information

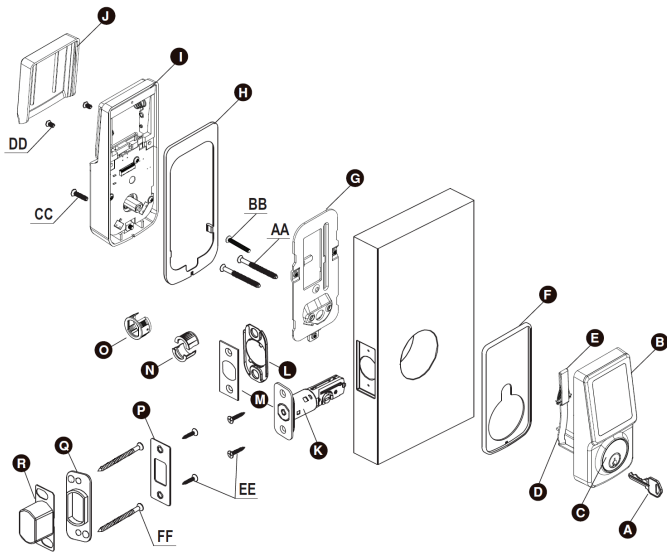
- > Do not attempt to disassemble any internal components of the lockset personally.
- > Do not drop or hit the lockset. Too much shock may result in permanent damage.
- > Do not use pins or sharp objects to press on the keyboard.
- > Always create a backup of information you want to keep, such as the programming and user codes.
- > Change the programming code before operating this lockset.

Care & Maintenance Information

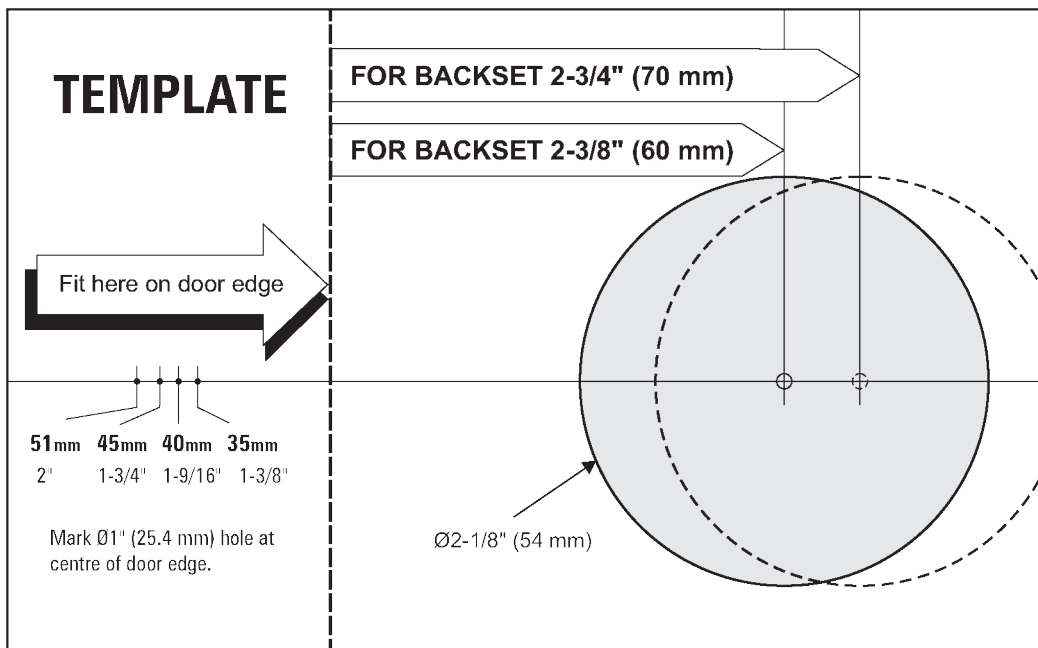
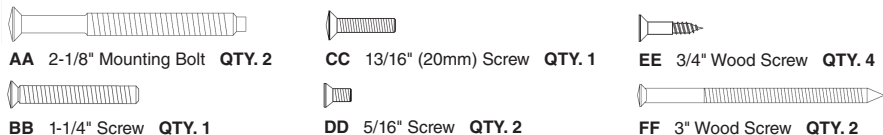
- > Remove lock, or do not install lock, prior to painting your door.
- > Periodically clean with mild soap and a soft cloth only.
- > Do not use any abrasives or chemical products containing alcohol, benzene, hydrochloric acid or nitric acid and avoid using sharp or abrasive objects to clean this lockset.
- > Do not let any water or liquid into lockset during installation process.



Package Contents



Part	Description	Quantity
A	Key	2
B	Exterior Assembly (Deadbolt Touchpad)	1
C	Cylinder	1
D	Tailpiece	1
E	Power Cable	1
F	Exterior Gasket (Optional)	1
G	Mounting Plate	1
H	Interior Gasket (Optional)	1
I	Interior Assembly (Receiver)	1
J	Battery Cover	1
K	Deadbolt Latch	1
L	Latch Bottom Plate (Optional)	1
M	Latch Square Or Radius Faceplate (Optional)	1
N	Drive-in Sleeve (Optional)	1
O	Drive-in Sleeve (Optional)	1
P	Striker Plate	1
Q	Reinforced Striker Plate	1
R	Dust Box	1

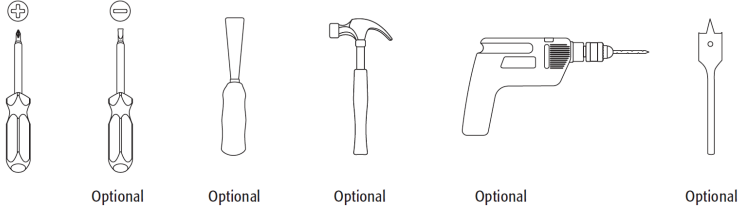


PRINT AT 100% SCALE

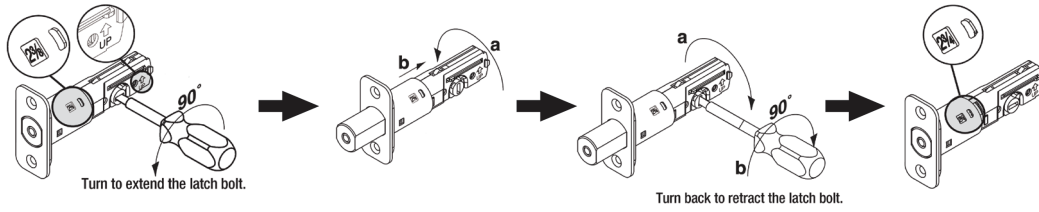
TOUCHPAD ELECTRONIC DEADBOLT LOCK

Product code: 1331

Tools Required

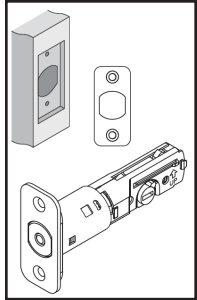


Installation

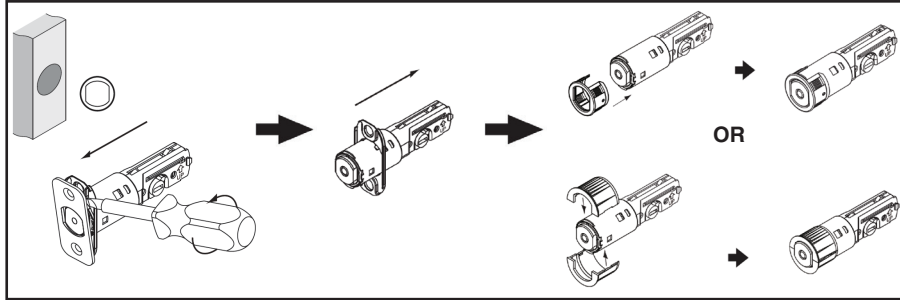


- Adjust the latch to the desired backset (60mm or 70mm). Backset is the distance from the door edge to the centre of the hole on the door face.
To adjust the latch to the 70mm (2-3/4") backset, make sure the latch cam is upright. Then use a screw driver to extend the latch bolt. Twist the latch end and pull it out, then twist it back. To return to the 60mm (2-3/8") backset, repeat this process, but push the latch end in instead of pulling it out.

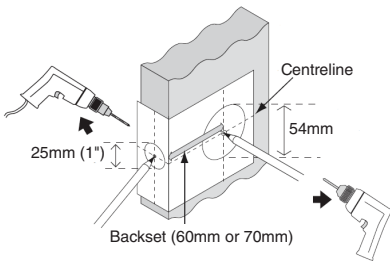
Square Faceplate



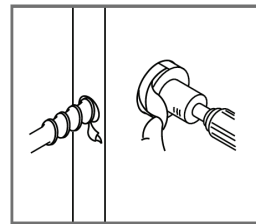
Drive-in Sleeve



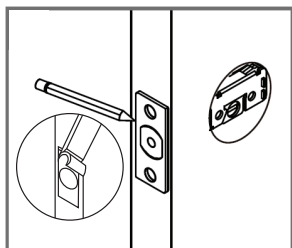
- Determine which latch mounting method will be used (square plate or drive-in) and make the necessary adjustments.
No adjustments are required for the square latch face plate.
When using the drive-in sleeves use a flat screwdriver to separate the face plate. Then align the drive-in sleeve and snap it into the latch case or align the two separate pieces of the drive-in sleeve around the latch case and snap them onto one another.



- Establish the height and backset for the lock on the door. Use the template provided as an indication to mark the centre of the circle on the door face and the centre of the door edge.

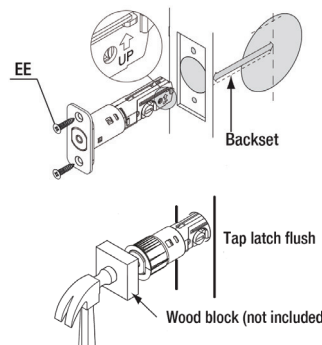


- Use the marks as a guide for drilling a 25mm (1") diameter hole through the door edge to a depth of at least 100mm. Ensure this hole is square to the door. Then drill a 54mm diameter hole through the door face for the lockset. We recommend using a 54mm hole saw. For clean cut-outs, drill from both sides, meeting in the middle of the door.



- Insert the latch, scribe around the faceplate, remove, then chisel out 4mm deep recess to enable the latch faceplate to sit flush with the door edge.

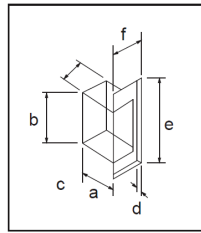
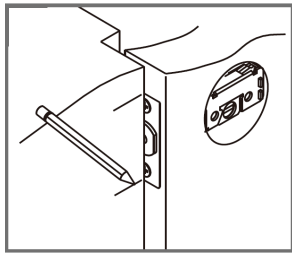
Note: This step only needs to be done for the square faceplate.



- Remove any loose saw dust, insert the latch and secure it with the two wood screws provided. Please do not fully tighten the screws until the lock is completely installed.
For the drive-in latch, drive the latch into the hole on the edge of the door.

TOUCHPAD ELECTRONIC DEADBOLT LOCK

Product code: 1331

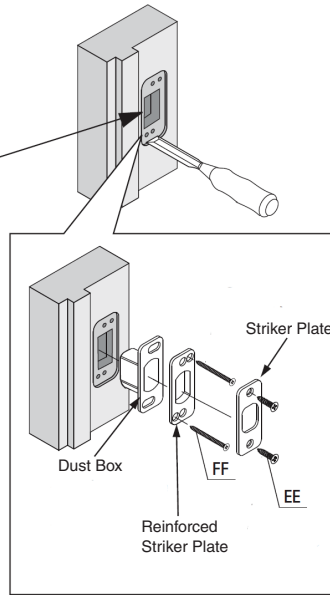


Door jamb hole dimensions

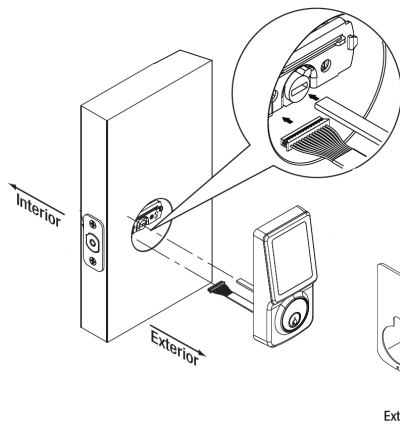
- a. 30mm
- b. 40mm
- c. 25mm

Striker dimensions

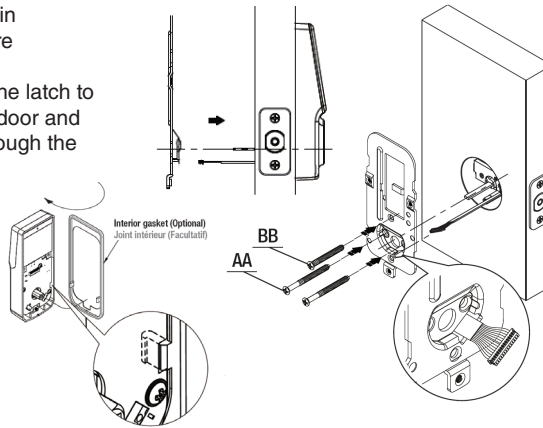
- d. 4mm
- e. 70mm
- f. 28mm



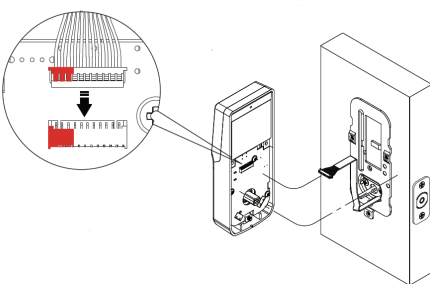
7. Close the door against the frame and mark the latch position for fitting of the striker. Using the striker plate as a pattern, drill the latch and screw holes and chisel out a 4mm recess along the striker outline to allow the striker to sit flush against the door frame. Secure the striker with the wood screws provided.



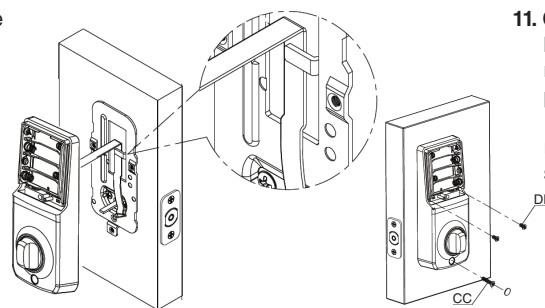
8. The latch bolt must be in retracted position before installing the lock. Pass the cable under the latch to the interior side of the door and insert the tail piece through the hub of the latch.



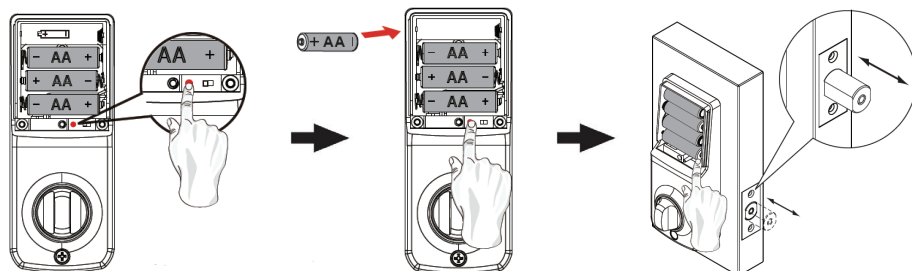
9. The bulged side of the mounting plate must face towards the door. Slide the power cable through the notch on the mounting plate on the interior side of the door. Fix the mounting plate with screws onto the door face. Make sure the deadbolt keypad on the outside is straight.



10. Connect the power cable firmly into the connector port.



11. Clasp the power cable behind the hook on the mounting plate to keep it in place. Insert and tighten the receiver module with the screws provided.



13. Insert four alkaline batteries. In order to perform automatic bolt direction determination, press the SET button while inserting the last battery. Then install the last battery. The latch bolt will reciprocate while still holding the SET button. Slide the battery cover onto the receiver module.

Note: Alkaline batteries are recommended in order to stabilise the power supply. If you do not use alkaline, battery performance will be reduced greatly.