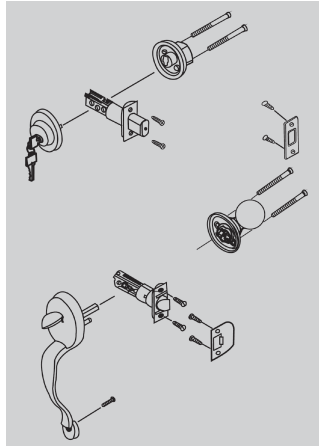


GRIPSET

Product codes:
9066, 9067

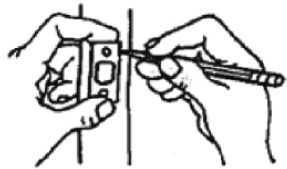


Latch

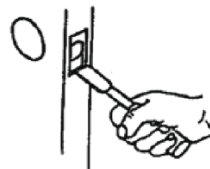
1. Select the appropriate latch (60mm or 70mm backset). The backset is the distance from the center of the spindle hole to the edge of the door. The backset adjustment is a sliding motion.

Deadbolt

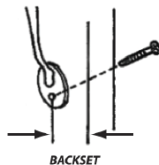
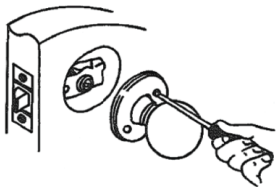
2. Change the position of the deadbolt to 60mm or 70mm backset by rotating the faceplate.
 - a) Rotate the faceplate clockwise and push to 2-3/8" (60mm) position from 70mm.
 - b) Rotate the faceplate clockwise and pull to 2-3/4" (70mm) position.



3. Using the template provided, identify the positions of the latch and deadbolt and drill the required holes in the edge of the door. Then drill the holes for the gripset, lock, turn and knob/lever in the face of the door.
4. Insert the latch and deadbolt in the holes, the deadbolt is placed in the upper hole and the latch is placed in the lower hole. Outline the faceplates, keeping the edges parallel to the face of the door.



5. Remove the latch and deadbolt and chisel out recess along the outline to enable the faceplates to sit flush with the door edge (4mm deep).
6. Remove any loose saw dust and insert the deadbolt in the upper hole with the hub pointing down and bolt extended. Secure the deadbolt with two wood screws provided.
7. Insert the latch in the lower hole and secure with two wood screws provided.



Lock and Turn

8. Place the lock against the outside of the door. The tailpiece must fit through the hub of the deadbolt in vertical position. Attach the turn with 2.5" (64mm) machine screw provided and tighten securely.

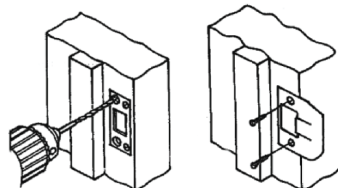
Gripset and Knob/Lever

9. Place the gripset against the outside of the door. The spindle must be inserted through the hub of the latch. Attach the inner knob/lever to the gripset posts at two vertical positions with either the 1" (25mm) or 1.5" (39mm.) trim screws depending on the width of your door. Attach the bottom of the gripset to the door face with wood screws or captive screws for a metal door at the same backset to the latch.

Upper Strike

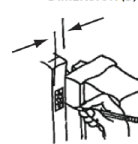
SECURITY STRIKE

OTHER STRIKES

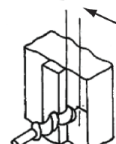


10. Partially close the door. Mark a horizontal line on the door frame at the height of the center of the latch. Measure from the door face (jamb side) to the center of the latch. Mark a vertical line on the frame using this dimension. Where the lines meet, drill a 1" (25mm) diameter hole to a depth of 16mm.
11. Center the strike over the hole and trace around it. Chisel out recess in the door frame until the strike sits flush.

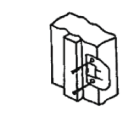
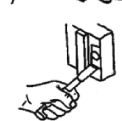
DIMENSION (B)



DIMENSION (B) FROM ABOVE



VERTICAL LINE



Lower Strike

12. Partially close the door. Mark a horizontal line on the door frame at the height of the center of the latch. Measure from the door face (jamb side) to the center of the latch. Mark a vertical line on the frame using this dimension. Where the lines meet, drill a 1" (25mm) diameter hole to a depth of 16mm.
13. Center the strike screw holes on the vertical center line and trace around the strike. Chisel out recess until the strike sits flush and install with the wood screws provided.

PLEASE PRINT AT 100% SCALE ON A3 PAPER

Template for Gripset Installation

