

Halo Dummy Lever

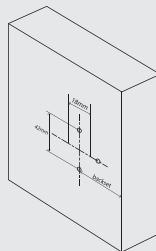
Product codes
9201D, 9211D, 9221D

Includes Lever
Screws

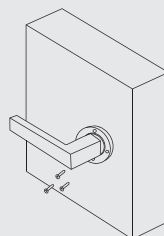
1. Establish the height and position for the handle on the door.

Note: It is important to ensure solid fixing is available for handle and screws (especially for hollow core doors).

2. Match the backset measurement of the passage doors throughout your home. Mark and drill three pilot holes, two vertically and one on the opposite side of the lever, at 42mm crs.

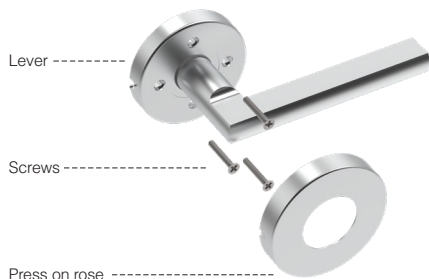
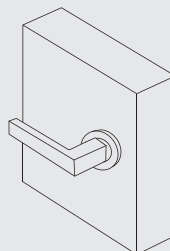


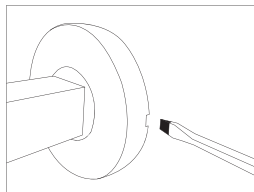
3. Install the handle by screwing the inner rose to the door with the wood screws provided.



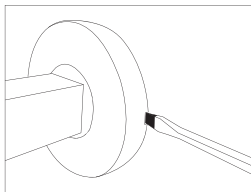
4. Press the rose cover onto the handle and align the dimples on the sides of the rose.

Note: Ensure the grub screw on the side of the lever is tight.

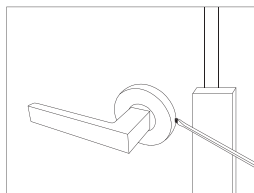


Halo - Rose Cover Removal**Product codes**
9201D, 9211D, 9221D

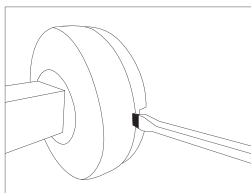
- 1.** To remove the rose cover off the handle, use a flat head screwdriver, ideally the same width as the groove on the side of the rose.



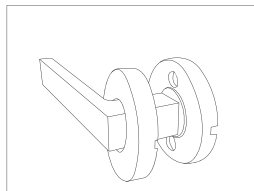
- 2.** Insert the screwdriver into the groove on the side of the rose.



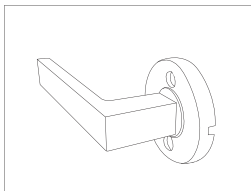
- 3.** To protect the door from getting damaged, use a small wooden block or something similar and use the screwdriver as a lever.



- 4.** Lever the rose cover off the handle. The rose cover will pop off.



- 5.** Carefully slide the loose rose cover off the handle.



- 6.** The screws can now be accessed and unscrewed.