

Windsor
ARCHITECTURAL HARDWARE

NEW

ARLU

Invisible Hinges

ARLU
OPENING DOORS

Taking minimalism and clean lines to a new level.

The ARLU range of Invisible and Pivot Hinges offer new concealed opening and closing systems.



Invisible Hinges

Invisible Hinges are completely unseen when the door is closed and an architecturally designed look when the door is open.



FEATURES AND BENEFITS

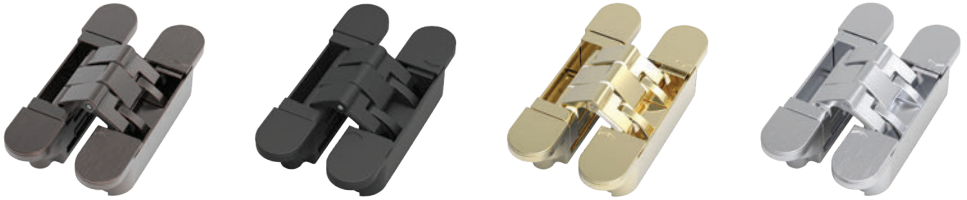
- > Universal: for left and right-opening doors
- > 180° opening angle
- > "Easy-hook": installation and adjustment by one person
- > Open and shutting movement cycle tests (min. 200,000)

Invisible PRO

9810 XS-4
Min Door Thickness 28mm
Up to 50kg doors

- > Simplified adjustability (height and width)
- > Compact dimensions: only 23mm built-in depth

Finishes:



Invisible NEO

9811 Invisible NEO S-5 (pic)
Min. Door Thickness 33mm
Up to 80kg doors

9812 Invisible NEO M-6
Min. Door Thickness 36mm
Up to 100kg doors

Finishes:



- > 3D adjustability (height, width, and depth) without taking the door off
- > Extra simplified height adjustment: no wedge required

Weight Table

Hinge Type	Invisible PRO XS-4		Invisible NEO S-5		Invisible NEO M-6	
Number of Hinges	2	3	2	3	2	3
Max. door weight according to door width	730mm	50kg	65kg	75kg	95kg	115kg
	830mm	45kg	60kg	70kg	90kg	110kg
	930mm	40kg	55kg	65kg	85kg	105kg
	1030mm	35kg	50kg	60kg	80kg	100kg

Technical Features

Hinge Type	Invisible Pro XS-4	Invisible NEO S-5	Invisible NEO M-6
Door thickness	min. 28mm	min. 33mm	min. 36mm
Overall depth	23mm (frame) / 23mm (door)	26.5mm (frame) / 30mm (door)	30mm (frame) / 32mm (door)
Dimensions (L x W)	100mm x 20mm	120mm x 25mm	140mm x 28mm
Height adjustment	-2.5 / +2.5mm	-2.5 / +2.5mm	-3.0 / +3.0mm
Width adjustment	-2.0 / +2.0mm	-3.0 / +4.0mm	-3.0 / +4.0mm

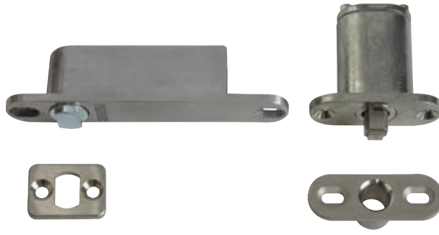
- > AB Antique Bronze
- > BLK Matt Black
- > PB Polished Brass
- > SS Stainless Steel
- > SVPR Silver Pearl
- > WHT White

Pivot Hinges

Pivot Hinges are mounted top and bottom to provide a swivel opening action on doors up to 150kg.

FEATURES AND BENEFITS

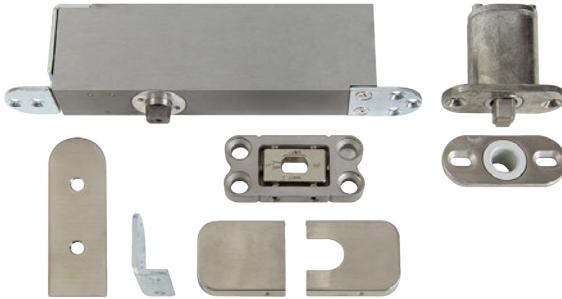
- > Easy installation
- > Opening angle in both directions up to 150°
- > Fixed settings at 90° in both directions
- > Free choice of rotating position (hinge point)
- > Child-friendly (easy to open)
- > Available for floor-to-ceiling-height doors



Pivovica

9800
Spring Loaded
Fixed Positions: Closed, 45° & 90°
20–60kg door

Finishes:



Pivovica Pro

9801 100 - F90 (pic)
Hydraulic Spring
Fixed Positions: Closed & 90°
Up to 100kg door
> Adjustable bottom plate

9804 Built-in Floor Mount
> Designed for use with 9801 Pivovica Pro

9805 150 - F90
Hydraulic Spring
Fixed Positions: Closed & 90°
Up to 150kg door

Finishes:



Pivovica Pro Cover Plates

9803 Pivovica Pro 100 Cover Plates
9807 Pivovica Pro 150 Cover Plates
> Designed for use with Pivovica Pro

Finishes:



Technical Features

Hinge Type	Pivovica	Pivovica Pro
Material	Aluminium & Stainless Steel	Aluminium & Stainless Steel
Door thickness	min. 40mm	min. 40mm
Door weight	60kg	max. 150kg
Door width	1500mm	2000mm*
Door height	3000mm	3000mm
Height adjustment	n/a	-3 / +3mm (Adjustable bottom plate)
Width adjustment	n/a	-3 / +3mm (Adjustable bottom plate)
Alignment	n/a	-4 / +4° (Adjustable bottom plate)

* = Central position of the hinge

